

ROCKBOARD®

by WARWICK



Innovation from the Ground up



The innovative RockBoard® design leaves nothing to be desired. Extremely light and durable, and with a full line of accessory options, it is the most flexible board around.

The RockBoard® Pedalboard series has been developed based on suggestions from musicians around the world.

The ultra-light and durable aluminum construction and innovative, functional surface design allows optimal pedal mounting and space-saving connections of all components with RockBoard® cables.

This system is complemented by MODs (Modular Patch Bays) with a variety of useful functions that can be fully integrated in the RockBoard® and the illuminated by the LED light.

The slotted grid of the RockBoard® is a perfect fit of our new QuickMount® system, which can be combined with PedalSafe® to protect your pedals from wear and tear.

Nicolas Wilfer

Nicolas Wilfer
Framus & Warwick GmbH & Co Music Equipment KG

ROCKBOARD® by WARWICK

Pedalboard Series	4 - 11
Gig Bags, Flight Cases	12 - 13
Add-Ons	14 - 15
LED Lights	16 - 17
MODs and Supports	18 - 21
QuickMount® System	22 - 23
PedalSafe®	24 - 27
Power Supplies	28 - 31
Power Cables	32 - 35
Instrument Cables	36 - 37
Patch Cables	38 - 39
PatchWorks® (BYO)	40 - 41
Connectors	42 - 43
XLR, TRS, Looper/Switcher Cables	44 - 45
MIDI Cables	46 - 47
Pedal Bags	48 - 49
Suitcases	50 - 51
StageTuner	52 - 53
Accessories	54 - 56

[Click to reach products](#)

The RockBoard Series and many of its components are protected by various IP-rights including Patents, Trademarks and Design Rights and may be inspected under www.warwickbass.com/IP_RockBoard

WARWICK®, ROCKBOARD®, PEDALSAFE®, and QUICKMOUNT® are the trademarks of Warwick GmbH & Co. Music Equipment KG ("Warwick"), which may be registered in one or several categories of goods with the United States Patent & Trademark Office. Some of the aforementioned trademarks may be registered in one or several categories of goods in certain other territories. This is not a comprehensive list of all trademarks of Warwick and specifically does not include any common law trademarks of Warwick. All other names and marks not mentioned herein are the trade names, trademarks or service marks of their respective owners.

New Sizes to fit Any Rig



RockBoard® Pedal Boards

The ingenious and lightweight design of the RockBoard is rigid and rugged. Built with a single sheet of cold-rolled aluminum and U-shaped vertical support braces, the RockBoard is one of the strongest pedalboards on the market. Using innovated gridded, slot-based designed to easily hide and organize your cabling and secure your pedals, organizing your setup has never been easier. In addition to several new sizes, added and improved features of the RockBoard line include additional MOD slots, increased versatility in power supply placement, improved pedalboard bags, stronger flight cases and brand-new accessories!

- Sturdy and light, cold rolled aluminum construction
- Slotted design for easy pedal mounting
- Mounting holes for RockBoard LED Light (Sold separately)
- U-shaped support braces
- 10° angled surface
- Seamless, black powder-coated surface



Duo 2.0

31.8 x 14.2 cm / 12³³/₆₄" x 5¹⁹/₃₂"

with Gig Bag RBO B 2.0 DUO B

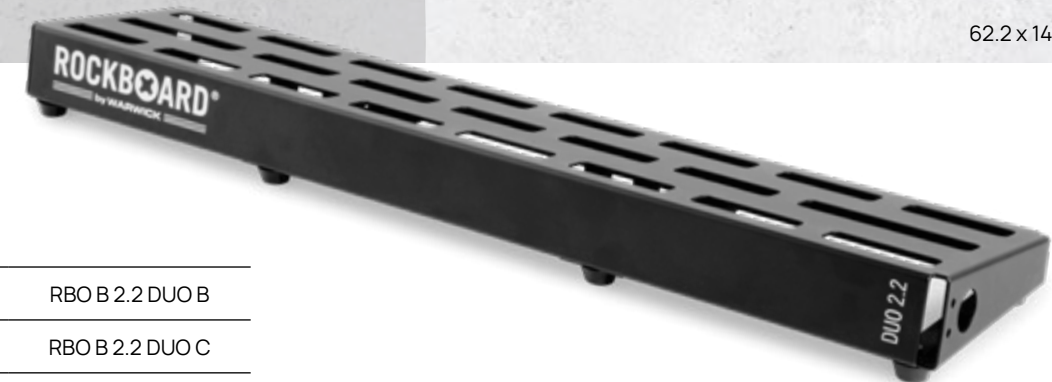


Duo 2.1

47.0 x 14.2 cm / 18¹/₂" x 5¹⁹/₃₂"

with Gig Bag RBO B 2.1 DUO B

with Flight Case RBO B 2.1 DUO C



Duo 2.2

62.2 x 14.2 cm / 24³¹/₆₄" x 5¹⁹/₃₂"

with Gig Bag RBO B 2.2 DUO B

with Flight Case RBO B 2.2 DUO C



Duo 2.3

72.2 x 14.2 cm / 28²⁷/₆₄" x 5¹⁹/₃₂"

with Gig Bag RBO B 2.3 DUO B

with Flight Case RBO B 2.3 DUO C



Tres 3.0

44.2 x 23.6 cm / 17 13/32" x 9 19/64"

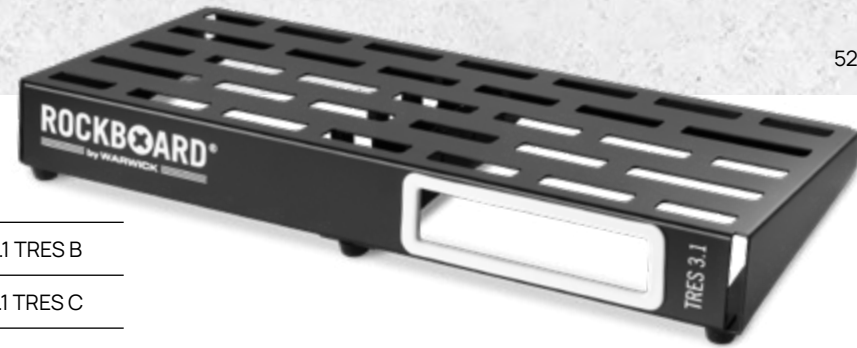
with Gig Bag	RBO B 3.0 TRES B
with Flight Case	RBO B 3.0 TRES C



Quad 4.1

47.0 x 33.0 cm / 18 1/2" x 12 63/64"

with Gig Bag	RBO B 4.1 QUAD B
with Flight Case	RBO B 4.1 QUAD C



Tres 3.1

52.2 x 23.6 cm / 20 35/64" x 9 19/64"

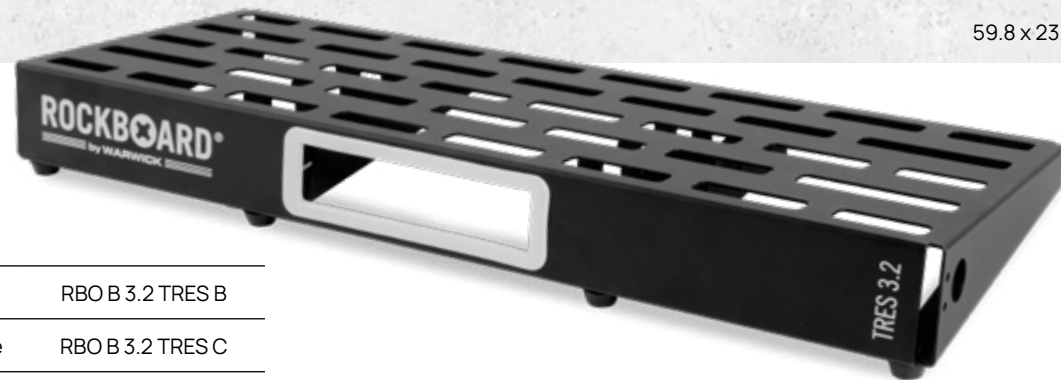
with Gig Bag	RBO B 3.1 TRES B
with Flight Case	RBO B 3.1 TRES C



Quad 4.2

62.2 x 33.0 cm / 24 31/64" x 12 63/64"

with Gig Bag	RBO B 4.2 QUAD B
with Flight Case	RBO B 4.2 QUAD C



Tres 3.2

59.8 x 23.6 cm / 23 35/64" x 9 19/64"

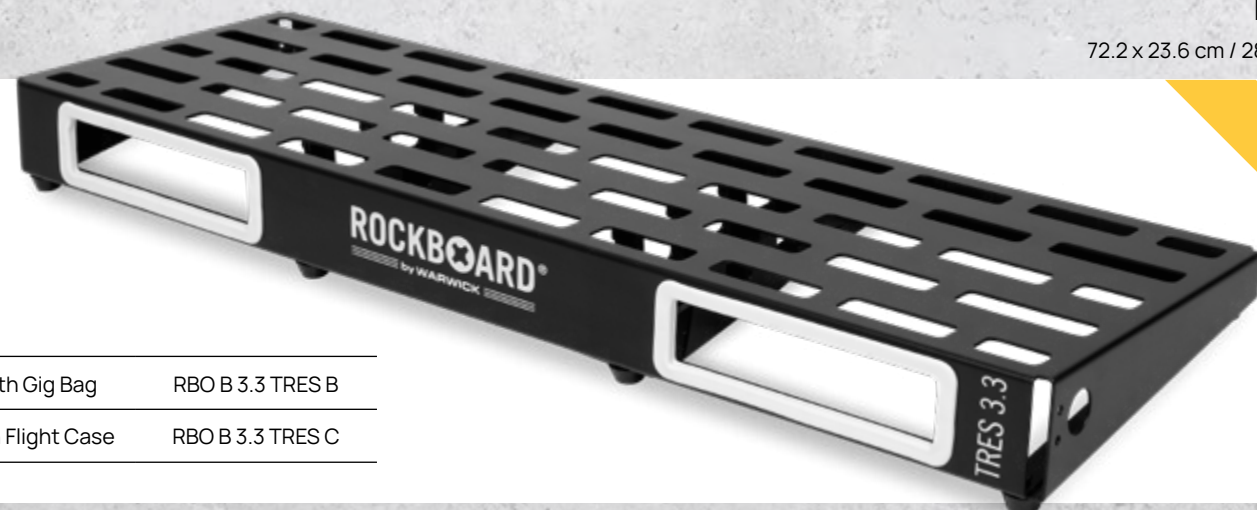
with Gig Bag	RBO B 3.2 TRES B
with Flight Case	RBO B 3.2 TRES C



Quad 4.3

82.8 x 33.0 cm / 32 19/32" x 12 63/64"

with Gig Bag	RBO B 4.3 QUAD B
with Flight Case	RBO B 4.3 QUAD C



Tres 3.3

72.2 x 23.6 cm / 28 27/64" x 9 19/64"

NEW

with Gig Bag	RBO B 3.3 TRES B
with Flight Case	RBO B 3.3 TRES C



Quad 4.4

72.2 x 33.0 cm / 28 27/64" x 12 63/64"

NEW

with Gig Bag	RBO B 4.4 QUAD B
with Flight Case	RBO B 4.4 QUAD C

Space for up to 30 pedals!



Cinque 5.2

62.2 x 42.4 cm / 24 31/64" x 16 11/16"



- with Gig Bag RBO B 5.2 CINQUE B
- with Flight Case RBO B 5.2 CINQUE C



Cinque 5.3

82.0 x 42.4 cm / 32 9/32" x 16 11/16"

- with Gig Bag RBO B 5.3 CINQUE B
- with Flight Case RBO B 5.3 CINQUE C



Cinque 5.3 MAX

82.6 x 49.8 cm / 32 33/64" x 19 19/64"

- with Gig Bag RBO B 5.3 CINQ MAX B
- with Flight Case RBO B 5.3 CINQ MAX C

NEW

Cinque 5.4

100.2 x 42.4 cm / 39 29/64" x 16 11/16"



- with Gig Bag RBO B 5.4 CINQUE B
- with Flight Case RBO B 5.4 CINQUE C

RockBoard Size Comparisons

Duo 2.0



For approx. 3 to 5 effects pedals (depending on size).
Dimensions: 31.8 x 14.2 cm / 12^{33/64}" x 5^{19/32}".
Weight 0.5 kg / 1.1 lbs.

Duo 2.1



For approx. 4 to 7 effects pedals (depending on size).
Dimensions: 47.0 x 14.2 cm / 18^{1/2}" x 5^{19/32}".
Weight 0.7 kg / 1.6 lbs.

Duo 2.2



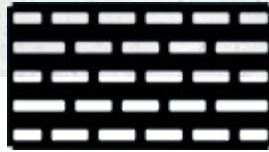
For approx. 5 to 9 effects pedals (depending on size).
Dimensions: 62.2 x 14.2 cm / 24^{31/64}" x 5^{19/32}".
Weight 0.9 kg / 2 lbs.

Duo 2.3



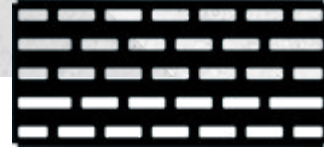
For approx. 7 to 11 effects pedals (depending on size).
Dimensions: 72.2 x 14.2 cm / 28^{27/64}" x 5^{19/32}".
Weight 1 kg / 2.2 lbs.

Tres 3.0



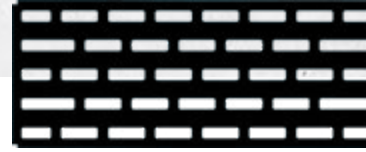
For approx. 5 to 10 effects pedals (depending on size).
Dimensions: 44.2 x 23.6 cm / 17^{13/32}" x 9^{19/64}".
Weight 0.95 kg / 2.1 lbs.

Tres 3.1



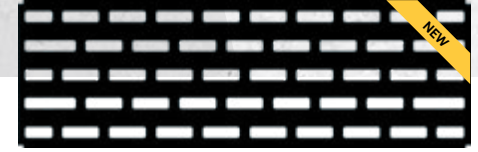
For approx. 5 to 10 effects pedals (depending on size).
Dimensions: 52.2 x 23.6 cm / 20^{35/64}" x 9^{19/64}".
Weight 1.2 kg / 2.7 lbs.

Tres 3.2



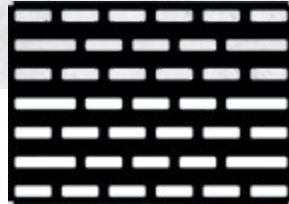
For approx. 7 to 12 effects pedals (depending on size).
Dimensions: 59.8 x 23.6 cm / 23^{35/64}" x 9^{19/64}".
Weight 1.3 kg / 2.9 lbs.

Tres 3.3



For approx. 9 to 14 effects pedals (depending on size).
Dimensions: 72.2 x 23.6 cm / 28^{27/64}" x 9^{19/64}".
Weight 1.5 kg / 3.3 lbs.

Quad 4.1



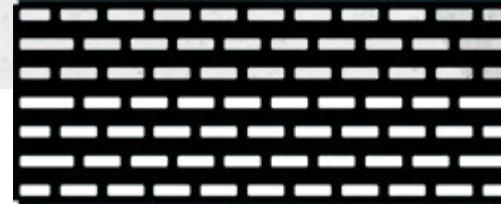
For approx. 7 to 12 effects pedals (depending on size).
Dimensions: 47.0 x 33.0 cm / 18^{1/2}" x 12^{63/64}".
Weight 1.5 kg / 3.3 lbs.

Quad 4.2



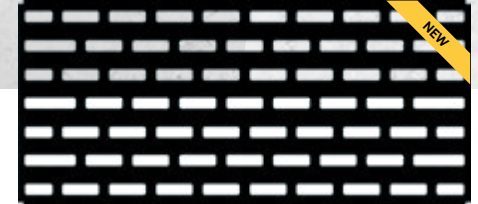
For approx. 9 to 15 effects pedals (depending on size).
Dimensions: 62.2 x 33.0 cm / 24^{31/64}" x 12^{63/64}".
Weight 2.05 kg / 4.5 lbs.

Quad 4.3



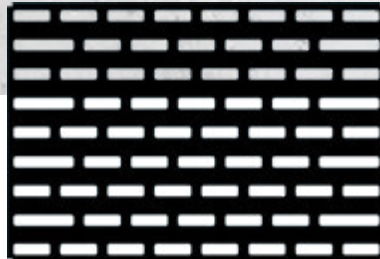
For approx. 10 to 20 effects pedals (depending on size).
Dimensions: 82.8 x 33.0 cm / 32^{19/32}" x 12^{63/64}".
Weight 2.4 kg / 5.3 lbs.

Quad 4.4



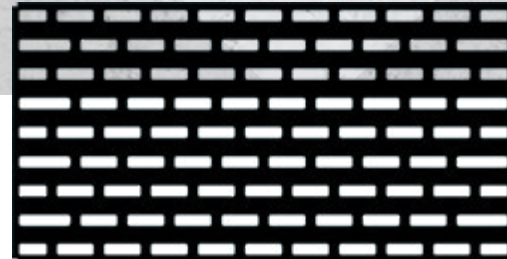
For approx. 9 to 18 effects pedals (depending on size).
Dimensions: 72.2 x 33.0 cm / 28^{27/64}" x 12^{63/64}".
Weight 5 kg / 11 lbs.

Cinque 5.2



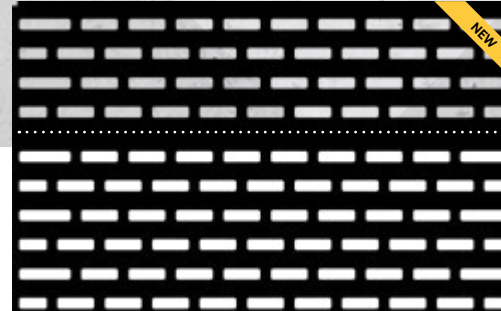
For approx. 10 to 20 effects pedals (depending on size).
Dimensions: 62.2 x 42.4 cm / 24^{31/64}" x 16^{11/16}".
Weight 3.95 kg / 8.7 lbs.

Cinque 5.3



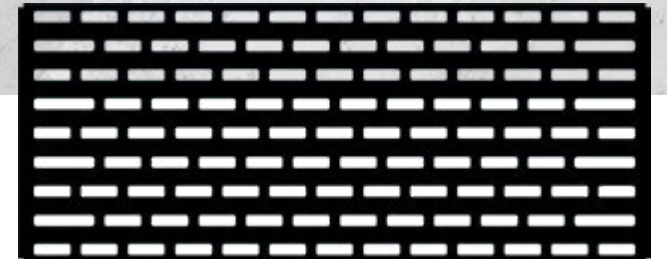
For approx. 15 to 25 effects pedals (depending on size).
Dimensions: 82.0 x 42.4 cm / 32^{9/32}" x 16^{11/16}".
Weight 4.5 kg / 9.9 lbs.

Cinque 5.3 MAX



For approx. 15 to 25 effects pedals (depending on size).
Dimensions: 82.6 x 49.8 cm / 32^{33/64}" x 19^{19/64}".
Weight 6.5 kg / 14.3 lbs.

Cinque 5.4



For approx. 20 to 30 effects pedals (depending on size).
Dimensions: 100.2 x 42.4 cm / 39^{29/64}" x 16^{11/16}".
Weight 9.55 kg / 21.1 lbs.

Road Ready Protection

With RockBoard® pedalboard comes your choice of a case or bag. Choose between a soft, durable Gig Bag or road ready Flight Case.

Gig Bags



Flight Cases



RockBoard® Pedalboard	RockBoard® Professional Gig Bag Product Nr.
DUO 2.0	RBO BAG 2.0 DUO
DUO 2.1	RBO BAG 2.1 DUO
DUO 2.2	RBO BAG 2.2 DUO
DUO 2.3	RBO BAG 2.3 DUO
TRES 3.0	RBO BAG 3.0 TRES
TRES 3.1	RBO BAG 3.1 TRES
TRES 3.2	RBO BAG 3.2 TRES
TRES 3.3	RBO BAG 3.3 TRES

RockBoard® Pedalboard	RockBoard® Professional Gig Bag Product Nr.
QUAD 4.1	RBO BAG 4.1 QUAD
QUAD 4.2	RBO BAG 4.2 QUAD
QUAD 4.3	RBO BAG 4.3 QUAD
QUAD 4.4	RBO BAG 4.4 QUAD
CINQUE 5.2	RBO BAG 5.2 CINQUE
CINQUE 5.3	RBO BAG 5.3 CINQUE
CINQUE 5.3 MAX	RBO BAG 5.3 CINQ MAX
CINQUE 5.4	RBO BAG 5.4 CINQUE

- 10 mm / 3/8" padding
- padded twin-handle
- metal hardware
- strong, water-resistant RokTex® surface material
- detachable, adjustable, and padded shoulder strap
- 2-way zipper with nylon grip
- PVC (Polyvinylchloride) reinforced bottom
- 1 x sturdy front pocket for cables and accessories

RockBoard® Pedalboard	RockBoard® Flight Case Product Nr.
DUO 2.1	RBO CASE 2.1 DUO
DUO 2.2	RBO CASE 2.2 DUO
DUO 2.3	RBO CASE 2.3 DUO
TRES 3.0	RBO CASE 3.0 TRES
TRES 3.1	RBO CASE 3.1 TRES
TRES 3.2	RBO CASE 3.2 TRES
TRES 3.3	RBO CASE 3.3 TRES

RockBoard® Pedalboard	RockBoard® Flight Case Product Nr.
QUAD 4.1	RBO CASE 4.1 QUAD
QUAD 4.2	RBO CASE 4.2 QUAD
QUAD 4.3	RBO CASE 4.3 QUAD
QUAD 4.4	RBO CASE 4.4 QUAD
CINQUE 5.2	RBO CASE 5.2 CINQUE
CINQUE 5.3	RBO CASE 5.3 CINQUE
CINQUE 5.3 MAX	RBO CASE 5.3 CINQ MAX
CINQUE 5.4	RBO CASE 5.4 CINQUE

- 10 mm / 3/8" plywood with PVC surface in aluminum look
- aluminum edges
- interior lining out of dense EPS foam
- lid with soft convoluted foam
- 1 carry handle
- 2 lockable snap locks
- aluminum joining rim
- 4 rubber feet

Customize Your Board

1 Drawer (Pedalboard)

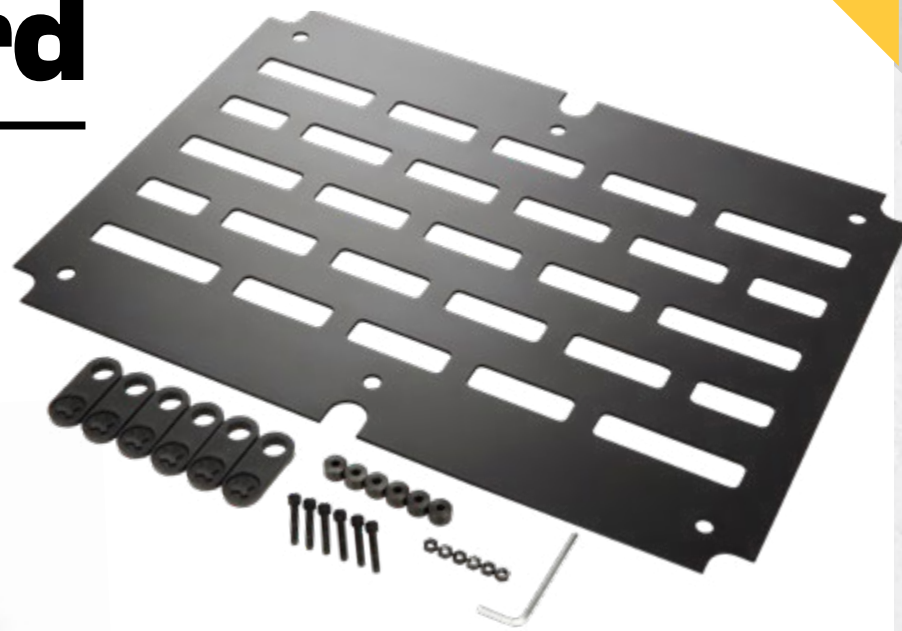


1 Drawer
Rotating mounting drawer for RockBoard pedalboards. Intelligent swivel locking mechanism for accessories, cables, wireless systems, etc. Fits MOD slots in RockBoard pedalboards (except RockBoard DUO 2.0, 2.1, 2.2, and 2.3). Material: reinforced polyamide. Incl. all mounting screws, counter nuts, and tools. Dimensions (W x D x H): 175 x 84.5 x 47 mm / 6 57/64" x 3 21/64" x 1 27/32". Weight: 150 g / 0.33 lbs. Product Nr.: RBO B MOD DRAWER

2 Base Plate
Universal mounting solution and base plate for pedalboards. Offers clean cable routing, additional space and optimal protection for power supplies, effects, cables and more. Easy mounting, no additional drill holes required. Made of aluminum (material thickness: 2.0 mm / 5/64"). Powder coated black surface. Incl. all mounting accessories and tools.

Type	Dimensions (L x W)	Weight	Product Nr.
TRES 3.1	509 x 227 mm / 20 3/64" x 8 15/16"	530 g / 1.17 lbs	RBO BASE PLATE 3.1
TRES 3.2	586 x 227 mm / 23 5/64" x 8 15/16"	620 g / 1.37 lbs	RBO BASE PLATE 3.2
QUAD 4.1	458 x 327 mm / 18 1/32" x 12 7/8"	750 g / 1.65 lbs	RBO BASE PLATE 4.1
QUAD 4.2	605 x 327 mm / 23 13/16" x 12 7/8"	890 g / 1.96 lbs	RBO BASE PLATE 4.2
QUAD 4.3	813 x 327 mm / 32 1/64" x 12 7/8"	1170 g / 2.58 lbs	RBO BASE PLATE 4.3
CINQUE 5.3	807 x 417 mm / 31 49/64" x 16 27/64"	1570 g / 3.46 lbs	RBO BASE PLATE 5.3
CINQUE 5.3 MAX	794 x 488 mm / 31 17/64" x 19 7/32"	1850 g / 4.08 lbs	RBO BASE PLATE 5.3MA

2 Base Plate



NEW

3 The Tray
Universal power supply mounting solution. Fits all RockBoard® models (except DUO Series). No drill holes necessary. Fastened with included reusable clip-mount system. Weight: 210 g / 0.46 lb. Dimensions (L x W): 241 x 122 mm / 9 1/2" x 4 13/16". Product Nr.: RBO B THE TRAY

4 The Tray Rivet
Replacement Rivets for RockBoard® The Tray, reusable. Set of 5 pcs. Product Nr.: RBO B THE TRAY RIVET

5 Foot
Spare feet, suitable for all RockBoard® pedalboard models. Set of 4 pcs. Product Nr.: SP RBO FOOT

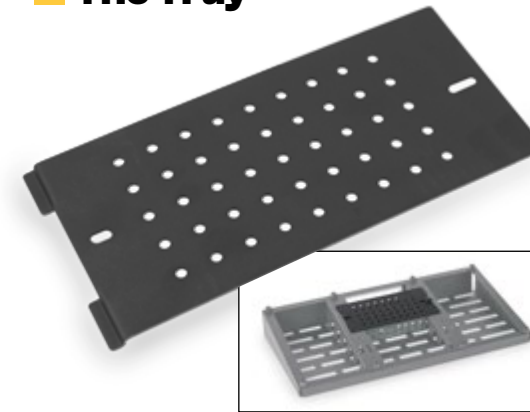
6 QuickMount Pedal Riser
Heightening tool for one effects pedal in standard format for better accessibility of the pedal on the upper rows of a RockBoard® pedalboard. Multiple pedal risers next to each other offer space for larger effects pedals. Easy mounting in the slot grid. Powder coated black surface. Dimensions (L x W): 135 x 76 mm / 5 5/16" x 2 63/64". Height: 25 - 46 mm / 63/64" - 1 13/16" (incl. rubber feet). Product Nr.: RBO B PEDAL RISER

7 Step up
Gives you easier access to pedals in the upper rows of the RockBoard® pedalboard. Simply attach the RockBoard® Step Up to the preferred location on your pedalboard and put the pedals on it. Three sizes for your RockBoard®.
Step Up 1 - Narrow
Product Nr.: RBO STEP UP 1
Step Up 2 - Large
Product Nr.: RBO STEP UP 2
Step Up 3 - Extra Large
Product Nr.: RBO STEP UP 3
Step Up Set (Narrow + Large + Extra Large)
Product Nr.: RBO STEP UP KIT

8 Frame XL
Optional brace for CINQUE 5.2, 5.3 and 5.4. Drop-in replacement for standard support braces. Compatible with The Tray. Allows for mounting of even the biggest power supplies underneath your pedalboard. Made of aluminum. Dimensions (L x W x H): 41.5 x 10 x 8.7 cm / 16 15/16" x 3 15/16" x 17/16". Product Nr.: RBO B FRAME XL

9 Frame 4 XL
Optional brace for Quad 4.1, 4.2 & 4.3. Drop-in replacement. Compatible with The Tray. Allows the mounting of even the biggest power supplies underneath your pedalboard. Made of aluminum. Dimensions (L x W x H) 323 x 52 x 27 - 74 mm / 12 23/32" x 2 3/64" x 1 1/16" - 2 29/32". Product Nr.: RBO B FRAME 4 XL

3 The Tray



4 The Tray Rivet



5 Foot



6 QuickMount Pedal Riser



7 Step up



8 Frame XL



9 Frame 4 XL

NEW

Keep Rocking After Dark

NEW

In a time of ever-growing effects rigs, visibility on stage is a major concern for many players. The RockBoard® LED Light will put an end to searching in the dark once and for all. Compatible with all RockBoard® Pedalboards, its simple 3-hole mounting clamp can be fixed to virtually any pedalboard to illuminate your effects rig on dark stages. With 4 dimmable settings and 6 color options, put your pedals in the limelight or provide subtle ambient illumination with ease.

6 colors selectable.



There when you need it.



And it disappears when it's in the way.



RockBoard® LED Light V2 and LED Light UNI

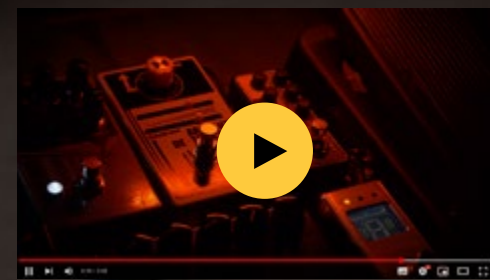
With 4 selectable brightness levels (100% / 75% / 50% / 25%) and 6 different colors, the brightness and mood can be perfectly adapted to the environment and personal needs. 16 powerful LEDs. Power via 9V DC adapter, 2.1 x 5.5 mm barrel plug, polarity (-) center. Current draw less than 100 mA. Dimensions (W x H x D) 220 x 220 x 25 mm / 8 21/32" x 8 21/32" x 63/64". Weight ca. 150 g / 0.33 lbs.

RockBoard® LED Light V2

The RockBoard LED Light (V2) is a multi-colored LED lamp specially designed for use with the RockBoard Pedalboard series. The LED Light (V2) is quickly and easily attached to the RockBoard Pedalboard using a lockable mounting clamp. Product Nr.: RBO B LED LIGHT V2

RockBoard® LED Light UNI

With A fixed universal clamp, the RockBoard LED Light (UNI) multi-colored LED lamp can be used on a wide variety of pedalboards, music stands, mixers, tabletops or flight cases. Incl. DC female to female barrel socket adapter, 2.1 mm x 5.5 mm. Product Nr.: RBO B LED LIGHT UNI



Click to watch video

More Than a Patchbay

Modular Patch Bays

- All-In-One Patchbay, fits perfectly into MOD slots in RockBoard® pedalboards
- Compatible with a wide variety of other pedalboards
- Acts as central access point to your effects setup
- Establishes clean cable paths within the pedalboard
- All connections mirrored on backside
- Detachable front plate for mounting on top or underneath pedalboards
- Incl. mounting screws, counter nuts and TX wrench



1 MOD 1 V2



2 MOD 2 V2



Click to watch video

1 MOD 1 V2

All-In-One Patchbay for pedalboards. 5 x 6.3 mm / ¼" TRS thru. 1 x XLR thru (male front / female back). 1 x DC 2.1 x 5.5 mm barrel thru. 1 x AC IEC thru (male front / female back). All connections mirrored on backside. Dimensions with front plate (W x D x H): 175 x 85 x 47 mm / 6 7/8" x 3 3/8" x 3 15/16". Dimensions without front plate (W x D x H): 160 x 85 x 33 mm / 6 5/16" x 3 3/8" x 1 5/16". Product Nr.: RBO B MOD 1 V2

2 MOD 2 V2

All-In-One Patchbay for pedalboards. 4 x 6.3 mm / ¼" TRS thru. 2 x 5-pin DIN MIDI thru. 1 x USB Type A thru. 1 x DC 2.1 x 5.5 mm barrel thru. 1 x AC IEC thru (male front / female back). Dimensions with front plate (W x D x H): 175 x 85 x 47 mm / 6 7/8" x 3 3/8" x 3 15/16". Dimensions without front plate (W x D x H): 160 x 85 x 33 mm / 6 5/16" x 3 3/8" x 1 5/16". Product Nr.: RBO B MOD 2 V2

3 MOD 3 V2

3 x 6.3 mm / ¼" TRS thru. 2 x XLR thru (male front / female back). 1 x XLR thru (female front / male back). 1 x DC 2.1 x 5.5 mm barrel thru. 1 x AC IEC thru (male front / female back). Dimensions with front plate (W x D x H): 175 x 85 x 47 mm / 6 7/8" x 3 3/8" x 3 15/16". Dimensions without front plate (W x D x H): 160 x 85 x 33 mm / 6 5/16" x 3 3/8" x 1 5/16". Product Nr.: RBO B MOD 3 V2

4 MOD 4

All-In-One Wireless Guitar System & Patchbay for pedalboards. Connects your instrument with your effects setup via digital wireless transmission system. 2.4 GHz ISM band for worldwide use. Range approx. 30 m / 100 ft. (without obstacles). Incl. wireless transmitter unit (RBO B MOD 4 U2 only). Incl. mounting screws and counter nuts. 4 x 6.3 mm / ¼" TRS thru. 1 x AC IEC thru (male front / female back). 1 x DC 2.1 x 5.5 mm barrel thru. 9 V DC 2.1 x 5.5 mm barrel input. Dimensions with front plate (W x D x H): 175 x 62 x 47 mm / 6 7/8" x 3 3/8" x 3 15/16". Dimensions without front plate (W x D x H): 160 x 60 x 33 mm / 6 5/16" x 3 3/8" x 1 5/16".

MOD 4

Product Nr.: RBO B MOD 4

MOD 4 with XVive U2 Transmitter

Product Nr.: RBO B MOD 4 U2

5 MOD 5

Cabinet simulation & DI patchbay. IR based speaker cabinet simulation. 6 integrated IRs selectable. Support of additional Custom IRs (max. 1024 pts.). Integrated active DI box. Headphone amplifier. 3 x 6.3 mm / ¼" TRS thru. XLR DI Out. 6.3 mm / ¼" Parallel TRS output. 3.5 mm / 1/8" stereo headphone output with adjustable volume. Micro USB connection for firmware updates and loading custom IRs. Power supply via optional 9V DC power adapter, 2.1 x 5.5 mm barrel plug, polarity (-) center. Current Draw 300 mA. Incl. mounting screws, counter nuts and TX wrench. Dimensions with front plate (W x D x H): 175 x 85 x 47 mm / 6 7/8" x 3 3/8" x 3 15/16". Dimensions without front plate (W x D x H): 160 x 85 x 33 mm / 6 5/16" x 3 3/8" x 1 5/16". Product Nr.: RBO B MOD 5

3 MOD 3 V2



4 MOD 4



MOD 4 with XVive U2 Transmitter

5 MOD 5

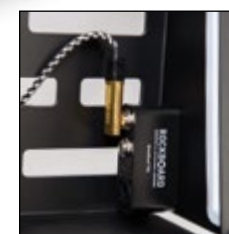


1 Mini MOD DC

NEW



2 Mini MOD TRS



1 Mini MOD DC

The RockBoard® Mini MOD DC is a simple DC patchbay for the RockBoard pedalboard series. Perfectly fitting the mounting holes of the LED Light on all pedalboards, it offers a convenient access of the power supply to the setup without

complex routing of the power supply cable under the pedalboard. The pedals can be permanently connected to a multi power supply and provide a convenient and easy power supply access to the board through the central DC 2.1 x 5.5 mm barrel thru access point. 1 x DC

2.1 x 5.5 mm female connector to 2 x DC 2.1 x 5.5 mm female connector (parallel). Dimensions (W x H x D): 70 x 35 x 20-25 mm. Weight 30 g. Incl. 3 mounting screws.

Product Nr.: RBO B MOD MINI DC

2 Mini MOD TRS

The RockBoard® Mini MOD TRS is a simple patchbay for the RockBoard pedalboard series. Perfectly fitting the LED Light mounting holes on all pedalboards, it provides a central access point from the instrument to the pedalboard or from the pedalboard to the amp. With the RockBoard® Mini MOD TRS, you can permanently connect your pedals under the board and conveniently organize all connections to and from your effects setup. The use of TRS jacks realizes send/return applications very easy. 1 x 6.3 mm TRS stereo jack to 2 x 6.3 mm TRS stereo jack. Send/return application can be realized with Y-split cable (not included). Dimensions (W x H x D): 70 x 35 x 20-25 mm. Weight 50 g. Incl. 3 mounting screws.

Product Nr.: RBO B MOD MINI TRS

3 MOD Rack

Module support rack for pedalboards. Allows horizontal and vertical mounting of MOD V2 on pedalboards of other brands. Mounting height of MOD V2 adjustable. Omni-directional. Incl. all mounting screws and counter nuts.

Product Nr.: RBO B MOD RACK

4 MOD Brace

Metal brace for RockBoard® MODs. Secures your RockBoard® MOD on the RockBoard® pedalboard. Made of stainless steel. Mounting hole distance (W x H): 168 x 28 mm / 6 5/8" x 1 1/8". Incl. mounting screws and wrench. Dimensions (W x D x H): 179 x 17 x 48 mm / 7 1/16" x 1 1/16" x 1 7/8".

Product Nr.: RBO B MOD BRACE

5 Screws

Replacement screws for RockBoard® MOD patchbays. M3 x 10 mm threads. TX10 drive. Set of 2 pcs. Incl. counter nuts.

Product Nr.: RBO B MOD SCREWS

6 19" Rack Panel Single (1U)

Mounting slot for one RockBoard MOD. Can be used to mount a RockBoard MOD (Not compatible with MOD 1,2,3 V1) into standard 19" racks. Steel panel. Powder coated. Black surface. Height: 1 U. Width: 19". Material thickness: 2.0 mm / 5/64". Weight: 430 g / 0.95 lbs.

Product Nr.: RBO B RACK PANEL 1

7 19" Rack Panel Double (1U)

Mounting slot for two RockBoard MODs. Can be used to mount two RockBoard MODs (Not compatible with MOD 1,2,3 V1) into standard 19" racks. Steel panel. Powder coated. Black surface. Height: 1 U. Width: 19". Material thickness: 2.0 mm / 5/64". Weight: 392 g / 0.86 lbs. Product Nr.: RBO B RACK PANEL 2

3 MOD Rack



4 MOD Brace



5 Screws



Click to watch video

6 19" Rack Panel Single (1U)



7 19" Rack Panel Double (1U)



Secure Them All

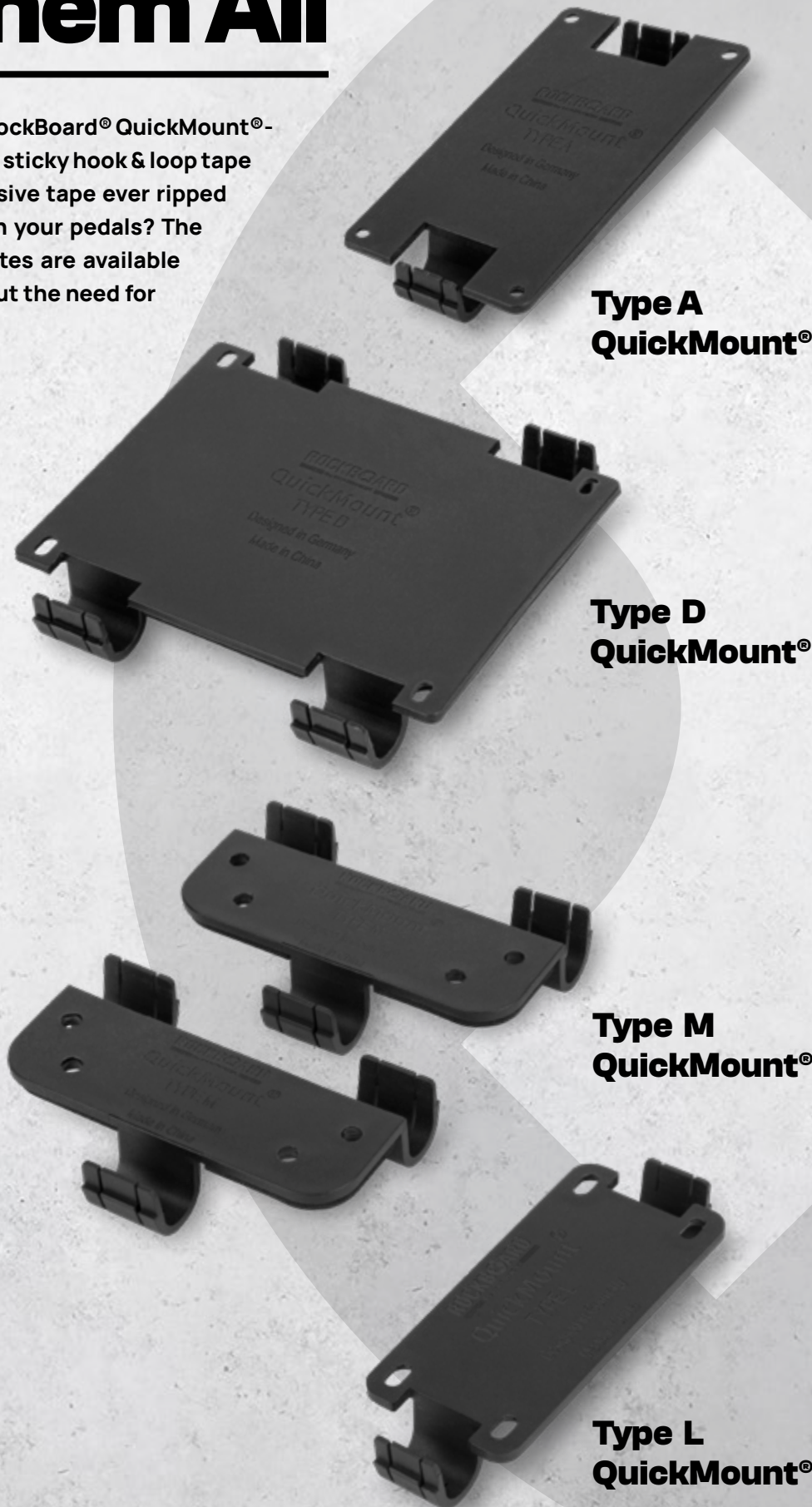
Innovation vs. Velcro® - Welcome to the RockBoard® QuickMount®-System. Have you ever dreaded using the sticky hook & loop tape that collects dust and debris? Has adhesive tape ever ripped off serial number or warranty stickers on your pedals? The RockBoard® QuickMount® mounting plates are available for a wide variety of pedal shapes without the need for adhesive hook & loop tape.



Click to watch video



Simply screw QuickMount® onto your pedals using the screws from their back plates (or the supplied longer screws if needed) and click them into the slot grid on the surface of your RockBoard®. Remove them easily with the help of the QuickRelease Tool.



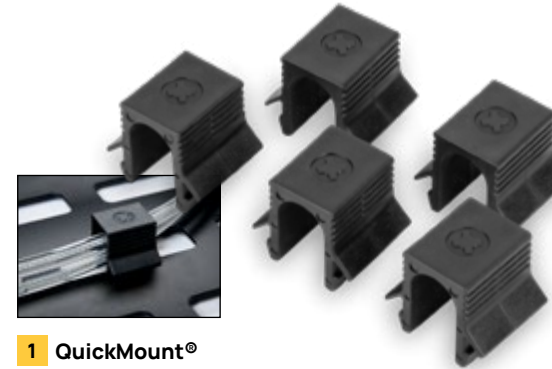
**Type A
QuickMount®**

**Type D
QuickMount®**

**Type M
QuickMount®**

**Type L
QuickMount®**

1 Cable Fix - Cable Clips



1 QuickMount® Cable Fix - Cable Clips (5 pcs.)
Cable Fix for cable management
Product Nr.: RBO B QM AC CF

2 QuickMount® Pick Box
PickBox Accessory Case
Product Nr.: RBO B QM AC PB

3 QuickMount® QuickRelease Tool
Product Nr.: RBO B QM AC QR

2 Pick Box



3 QuickRelease Tool

Quickmount Type	Usable with	Product Nr.
Type A	For standard size: MXR / Electro-Harmonix Nano Pedals	RBO B QM T A
Type B	For standard size: JHS Pedals, EarthQuaker Devices, Seymour Duncan	RBO B QM T B
Type C	For large vertical pedals: Electro-Harmonix, MXR, JHS Pedals, EarthQuaker Devices, Keeley Electronics and Darkglass Electronics	RBO B QM T C
Type D	For large horizontal pedals: Keeley Electronics, MXR, Electro-Harmonix For Warwick Gnome	RBO B QM T D
Type E	For BOSS compact pedals	RBO B QM T E
Type F	Only for Ibanez Tube Screamer / Maxon OD-9 shape pedals	RBO B QM T F
Type G	Only for TC Electronic TonePrint series pedals	RBO B QM T G
Type H	Only for DigiTech compact series pedals	RBO B QM T H
Type I	Only for Eventide H9 pedal	RBO B QM T I
Type J	Only for medium-sized Strymon effects pedals	RBO B QM T J
Type K	For Mooer micro series pedals	RBO B QM T K
Type L	For mini size Xotic, XVive, MXR, Pigtronix pedals	RBO B QM T L
Type M	For Dunlop CryBaby Wah Wah / For RockBoard® StageTuner ST-02	RBO B QM T M
Type UH	Universal type for horizontal shaped Hammond-style pedals Mounting hole distance (W x D): 103 x 51 mm	RBO B QM T UH
Type UV	Universal type for vertical pedals Dimensions: 96 x 48 mm	RBO B QM T UV

Protect Your Investments

The RockBoard® PedalSafes® are transparent rubber covers with detachable caps for easy access to your pedals controls. They will safeguard your pedals and keep them in pristine condition. No dirt, beer, dust or sweat will get through while you are rocking!

The PedalSafe® covers clamp onto mounting plates, which can be fixed to any pedalboard using screws or hook & loop tape - so you do not have to stick any adhesive onto the pedals. Additionally the RockBoard® PedalSafes® are compatible with the QuickMount® system and each PedalSafe® is also available with corresponding QuickMount® mounting plate for use with the RockBoard® series.



Specs for RockBoard® PedalSafes®

- Plastic, protective cover for the most popular effects pedals
- Protects your effects pedals from dirt and weather
- Secures settings against accidental knob adjustments
- Does not require modification to effects pedals
- Includes a baseplate for mounting on any pedalboard using screws or hook & loop tape, replacement mounting screws
- Also available with QuickMount® mounting plates for RockBoard® pedalboards

Keep your effects pedalsafe

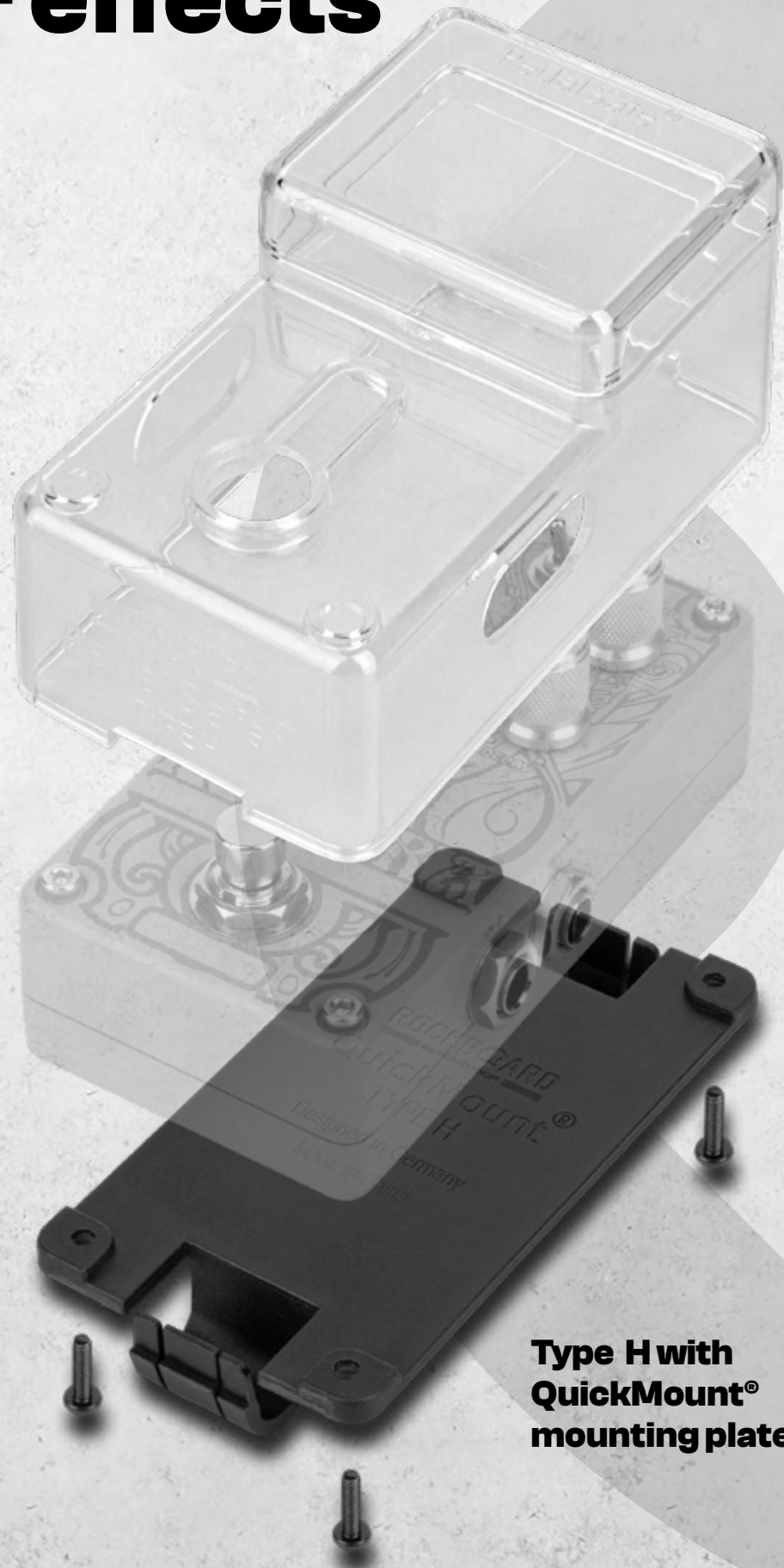
Secure your settings against unintentional adjustment of the controls.



A tiny home for your picks and accessories.



[Click to watch video](#)



Type H with QuickMount® mounting plate

PedalSafe® Set Type A1 with RockBoard® QuickMount® mounting plates.



PedalSafe® Set Type A1 with Universal Mounting Plates for ordinary boards.



PedalSafe® Type	Usable with	QuickMount® Mounting Plates Product Nr.	Universal Mounting Plates Product Nr.
Pick Box	Universal Pick Box with silicone pad	RBO B QM T PB	RBO B PS AC PB
Type A1	MXR Standard/Electro-Harmonix Nano pedals with 1 input and 1 output jack	RBO B PS T A1 RBO	RBO B PS T A1 UNI
Type A2	MXR Standard/Electro-Harmonix Nano pedals with 2 input and 2 output jack at least	RBO B PS T A2 RBO	RBO B PS T A2 UNI
Type B	Standard size pedals: Seymour Duncan, EarthQuaker Devices	RBO B PS T B RBO	RBO B PS T B UNI
Type C	Square shape (large vertical) pedals: Electro-Harmonix, Keeley Electronics, MXR, JHS Pedals, EarthQuaker Devices, Darkglass Electronics	RBO B PS T C RBO	RBO B PS T C UNI
Type D1	Large horizontal pedals with one row of knob configuration: Electro-Harmonix, MXR, Keeley Electronics	RBO B PS T D1 RBO	RBO B PS T D1 UNI
Type D2	Large horizontal pedals with two rows of knob configuration: MXR, Electro-Harmonix, Keeley Electronics	RBO B PS T D2 RBO	RBO B PS T D2 UNI
Type E	BOSS compact size pedals	RBO B PS T E RBO	RBO B PS T E UNI
Type F	Ibanez Tube Screamer / Maxon OD-9 shape pedals	RBO B PS T F RBO	RBO B PS T F UNI
Type G	TC Electronic TonePrint series pedals	RBO B PS T G RBO	RBO B PS T G UNI
Type H	DigiTech compact series pedals	RBO B PS T H RBO	RBO B PS T H UNI
Type I	Eventide H9 pedals	RBO B PS T I RBO	RBO B PS T I UNI
Type J	Medium size Strymon pedals	RBO B PS T J RBO	RBO B PS T J UNI
Type K1	Mooer micro series pedals with one big knob	RBO B PS T K1 RBO	RBO B PS T K1 UNI
Type K2	Mooer Micro Preamp, Tone Capture and Radar pedals – with more knobs configuration or big display	RBO B PS T K2 RBO	RBO B PS T K2 UNI
Type L	Mini size pedals: Xotic, XVive, MXR mini, Pigtronix	RBO B PS T L RBO	RBO B PS T L UNI

Bring Your Board to Life

1 ISO Power Block V6



NEW



2 ISO Power Block V6+



1 ISO Power Block V6

A multi-power supply for effects pedals with 5 isolated transformers and highly filtered 9V DC power slots and a single 18V DC link output to connect multiple ISO Power Blocks V6 in series for larger setups. The advanced filtering technology used in the 9V DC power slots prevents high-frequency noise. Built with individual slot short circuit protection, connected effects pedals are protected in case of a short circuit. With a designated LED for each power slot indicating the slot is working correctly, you can quickly identify any problems without losing power to the rest of your rig. Incl. 1x 18V DC power adapter (2,000 mA) with exchangeable multi-regional

plug adapters (EU, UK, US/CA, AU/NZ), input voltage 100-240V AC. Incl. 6x RockBoard Flat Power Cable, 60 cm (for connecting effects pedals). Dimensions (L x W x H): 120 x 70 x 25 mm / 4 23/32" x 2 3/4" x 63/64". Weight: 175 g / 0.38 lbs. Product Nr.: RBO POW BLOCK ISO 6

2 ISO Power Block V6+

A multi-power supply for effects pedals with 5 isolated transformers and highly filtered power slots (each slot is switchable for 9V / 12V / 15V / 18V) and a single 5V USB output. The RockBoard ISO Power Block V6+ was designed for powering up to 5 effects pedals simultaneously without any noise. The advanced filtering technology

used in the DC power slots prevents high frequency noise. Built with individual slot short circuit protection, connected effects pedals are protected in case of a short circuit. With a designated LED for each power slot indicating the slot is working correctly, you can quickly identify any problems without losing power to the remaining pedals. Incl. 1x 18V DC power adapter (2,000 mA) with exchangeable multi-regional plug adapters (EU, UK, US/CA, AU/NZ), input voltage 100-240V AC. Incl. 5x RockBoard Flat Power Cable (for connecting effects pedals). Dimensions (L x W x H): 120 x 70 x 26 mm / 4 23/32" x 2 3/4" x 1 1/32". Weight: 195 g / 0.43 lbs.

Product Nr.: RBO POW BLO ISO 6+

Power Block

The RockBoard® Power Block is a compact, lightweight power supply, delivering current for up to 10 effect pedals. Besides its 8 x 9V (max. 150 mA each) outputs, the Power Block also offers 2 x 18V (400 mA each) power slots. Individual LEDs indicate short circuits for each of the 9V outputs. This power supply provides a maximum total output of 2,000 mA and comes with all necessary connection cables as well as a main adapter.

3 Power Block V2



3 Power Block V2

Incl. interchangeable AC adapters. Incl. 10 x RockBoard® Flat Power Cables, angled/straight, 50 cm. Dimensions (W x H x D): 105 x 63 x 24 mm / 4 1/32" x 2 15/32" x 30/32". Product Nr.: RBO POW BLOCK

4 ISO Power Block V10 V2

Incl. interchangeable AC adapters. Incl. 10 x RockBoard® Flat Power Cable, 60 cm. Incl. 1 x RockBoard® Power Ace Voltage Doubler Y-Cable, 20 cm. Incl. 1 x RockBoard® Power Ace Current Doubler Y-Cable, 20 cm. Dimensions (W x H x D): 123 x 70 x 26 mm / 4 13/16" x 2 3/4" x 1 1/32". Product Nr.: RBO POW BLOCK ISO 10

5 ISO Power Block V16

16 x RBO cab power 60 AA . Multi Power 100/230V. Incl. interchangeable AC adapters. Dimensions (W x H x D): 105 x 63 x 24 mm / 4 1/32" x 2 15/32" x 30/32". Product Nr.: RBO POW BLOCK ISO 16

4 ISO Power Block V10 V2



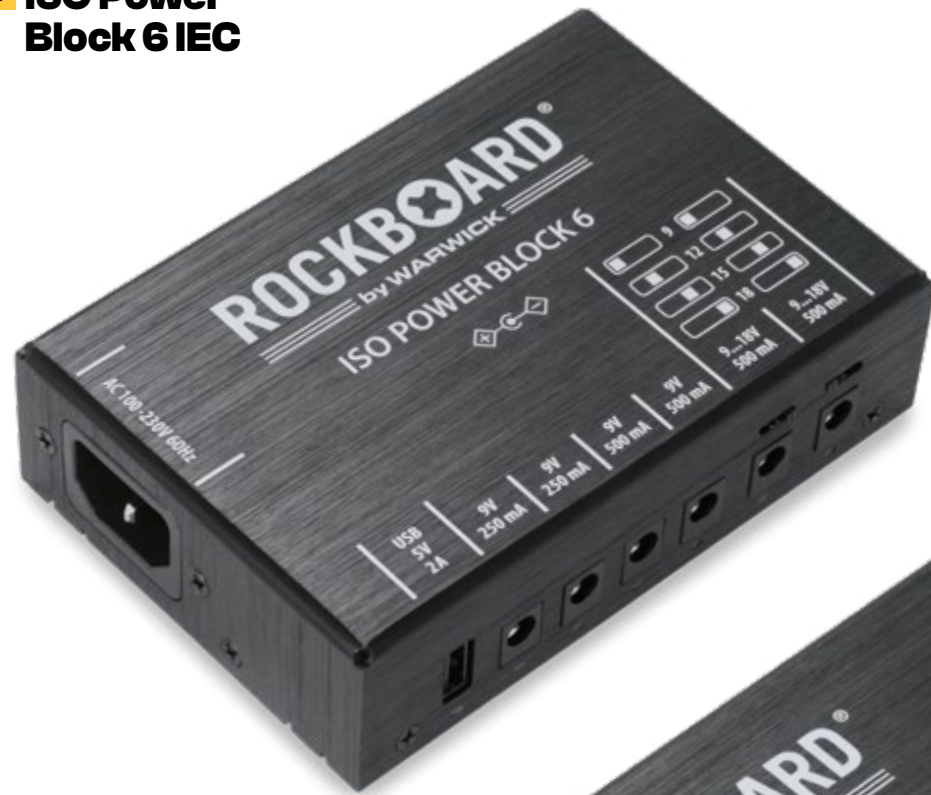
5 ISO Power Block V16



More Energy

NEW

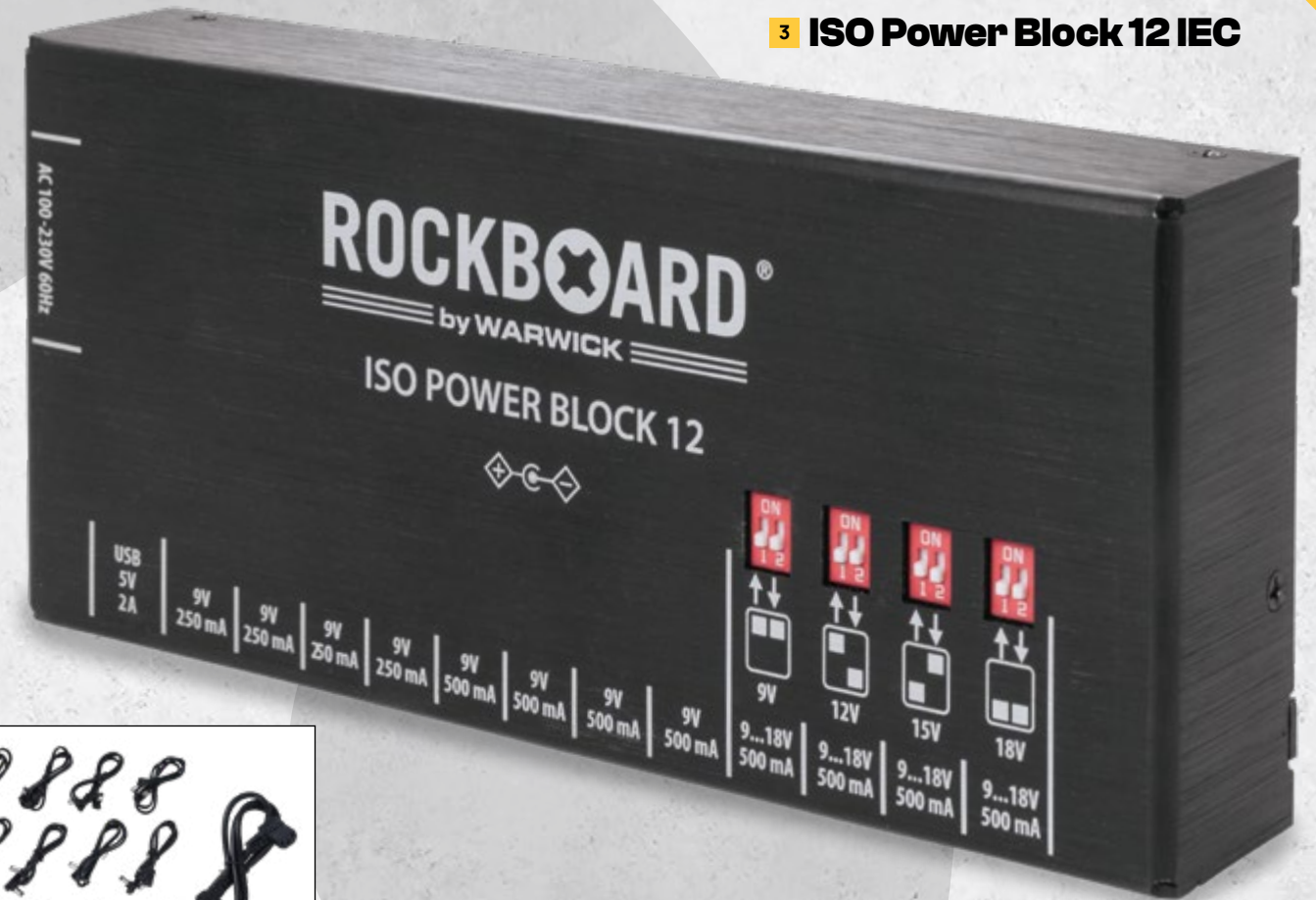
1 ISO Power Block 6 IEC



2 ISO Power Block 9 IEC



3 ISO Power Block 12 IEC



1 ISO Power Block 6 IEC

The RockBoard® ISO Power Block 6 IEC was designed for powering up to 6 effects pedals simultaneously without any noise. The advanced filtering technology and electrical isolation used in the DC power slots prevents high frequency noise and hum loops. Built with short circuit protection for each individual slot, connected effects pedals are protected in case of a short circuit. With a designated LED for each power slot indicating the slot is working correctly, you can quickly identify any problems without losing power to the remaining pedals. 2 x 9V DC (isolated); max. output 250 mA each. 2 x 9V DC (isolated); max. output 500 mA each. 2 x switchable slots (isolated) with 9V DC / 12V DC / 15V DC / 18V DC; each max. output 500 mA at 9V, 375 mA at 12V, 300 mA at 15V, 250 mA at 18V. 1 x USB 5V; max; max output 2A. Individual status LEDs and short circuit protection for all power slots. Input voltage of 100 to 240 volts and 47 to 63 Hz. Dimensions: (L x W x H): 130 x 88 x 35 mm (5 1/8" x 3 15/32" x 1 3/8"). Weight: 386 g / 0.85 lbs. Product Nr.: RBO POW ISO 6 IEC

2 ISO Power Block 9 IEC

The RockBoard® ISO Power Block 9 IEC was designed for powering up to 9 effects pedals simultaneously without any noise. The advanced filtering technology and electrical isolation used in the DC power slots prevents high frequency noise and hum loops. Built with short circuit protection for each individual slot, connected effects pedals are protected in case of a short circuit. With a designated LED for each power slot indicating the slot is working correctly, you can quickly identify any problems without losing power to the remaining pedals. 3 x 9V DC (isolated); max. output 250 mA each. 3 x 9V DC (isolated); max. output 500 mA each. 3 x switchable slots (isolated) with 9V DC / 12V DC / 15V DC / 18V DC; each max. output 500 mA at 9V, 375 mA at 12V, 300 mA at 15V, 250 mA at 18V. 1 x USB 5V; max; max output 2A. Individual status LEDs and short circuit protection for all power slots. Input voltage of 100 to 240 volts and 47 to 63 Hz. Dimensions: (L x W x H): 195 x 88 x 35 mm (7 43/64" x 3 15/32" x 1 3/8"). Weight: 591 g / 1.30 lbs. Product Nr.: RBO POW ISO 9 IEC

3 ISO Power Block 12 IEC

The RockBoard® ISO Power Block 12 IEC was designed for powering up to 12 effects pedals simultaneously without any noise. The advanced filtering technology and electrical isolation used in the DC power slots prevents high frequency noise and hum loops. Built with short circuit protection for each individual slot, connected effects pedals are protected in case of a short circuit. With a designated LED for each power slot indicating the slot is working correctly, you can quickly identify any problems without losing power to the remaining pedals. 4 x 9V DC (isolated); max. output 250 mA each. 4 x 9V DC (isolated); max. output 500 mA each. 4 x switchable slots (isolated) with 9V DC / 12V DC / 15V DC / 18V DC; each max. output 500 mA at 9V, 375 mA at 12V, 300 mA at 15V, 250 mA at 18V. 1 x USB 5V; max; max output 2A. Individual status LEDs and short circuit protection for all power slots. Input voltage of 100 to 240 volts and 47 to 63 Hz. Dimensions: (L x W x H): 195 x 88 x 35 mm (7 43/64" x 3 15/32" x 1 3/8"). Weight: 608 g / 1.34 lbs. Product Nr.: RBO POW ISO 12 IEC

Power Supplies

1 Power ACE



2 Power ACE 25



3 Power ACE Set



Flexibility For Your Effects

1 Power ACE
9V DC 1700 mA, Power Supply, with interchangeable AC adapters.
Product Nr.: RBO POWER ACE

2 Power ACE 25
9V DC 2500 mA, Power Supply, with interchangeable AC adapter.
Product Nr.: RBO POWER ACE 25

3 Power ACE Sst
9V DC 1700 mA, Power Supply + Cabling, with interchangeable AC adapters. Incl. 1x RockBoard® Power Ace Battery Clip Converter. Incl. 1x RockBoard® Power Ace Mini Jack Converter. Incl. 1x RockBoard® Power Ace Polarity Converter. Incl. 1x RockBoard® Power Ace Barrel Plug Converter.
Product Nr.: RBO POWER ACE SET

RockBoard® Power Adapters

Equipped with multi-regional plug adapters and a switching design it can be used virtually all around the globe.



Adapter Cables

3 Power ACE IEC Connector Cable



7 Power ACE Mini Jack Converter



9 Power ACE Barrel Plug Converter



5 Power ACE Voltage Doubler Y Cable



6 Power ACE Current Doubler Y Cable



8 Power ACE Polarity Converter



10 Power ACE Battery Clip Converter



4 Power ACE IEC Connector Cable
IEC male to female connector cable. Connects RockBoard MOD patchbays with multi-power supplies. Length 35 cm / 13 25/32".
Product Nr.: RBO POWER ACE IEC

5 Power ACE Voltage Doubler Y Cable
For combining voltage output of two isolated power slots. 2 x straight 2.1 x 5.5 mm barrel plugs (black) wired in parallel to 1 x 2.1 x 5.5 mm barrel socket (blue).
Product Nr.: RBO POWER ACE YVD

6 Power ACE Current Doubler Y Cable
For combining current output of two isolated

power slots. 2 x straight 2.1 x 5.5 mm barrel plugs (black) wired in parallel to 1 x 2.1 x 5.5 mm barrel socket (white).
Product Nr.: RBO POWER ACE YCD

7 Power ACE Mini Jack Converter
2.1 mm x 5.5 mm barrel connector female to 3.5 mm / 1/8" mini plug. For effects pedals with 3.5 mm power supply jack.
Product Nr.: RBO POWER ACE CON3.5

8 Power ACE Polarity Converter
2.1 x 5.5 mm female barrel connector (-) center to 2.1 x 5.5 mm barrel plug (+) center. Inverts polarity

from (-) center to (+) center. For effects pedals with polarity (+) center power supply sockets.
Product Nr.: RBO POWER ACE CONREV

9 Power ACE Barrel Plug Converter
2.1 x 5.5 mm female barrel connector to 2.5 x 5.5 mm barrel plug. For effects pedals with 2.5 x 5.5 mm power socket.
Product Nr.: RBO POWER ACE CONL6

10 Power ACE Battery Clip Converter
2.1 x 5.5 mm female barrel connector to 9V battery clip. For effects pedals without power supply jack.
Product Nr.: RBO POWER ACE CONBAT

RockBoard® Flat Power and Flat Daisy Chain Cables

The RockBoard® Flat Power Cables and Flat Daisy Chain Cables are high-quality power supply cables for effects pedals and were developed based on our Flat Patch Cables. Their super compact plugs are smaller than those of most other power cables on the market.

Unlike most commonly available power cables, RockBoard® Flat Power and Daisy Chain Cables do not use two parallel cable lines – instead, they use the same solid design as instrument cables with a central wire surrounded by a shielding layer. This prevents electrical interference in the audio signal.

Lose the Bulk, Keep the Power

1 Flat Power Cable Angled / Angled



2 Flat Power Cable Angled / Straight



3 Flat Daisy Chain Cable



1 Flat Power Cables Angled / Angled

Size	Product Nr.
15 cm / 5 29/32"	RBO CAB POWER 15 AA
30 cm / 11 13/16"	RBO CAB POWER 30 AA
60 cm / 23 5/8"	RBO CAB POWER 60 AA

2 Flat Power Cables Angled / Straight

Size	Product Nr.
15 cm / 5 29/32"	RBO CAB POWER 15 AS
30 cm / 11 13/16"	RBO CAB POWER 30 AS
60 cm / 23 5/8"	RBO CAB POWER 60 AS

3 Flat Daisy Chain Cable

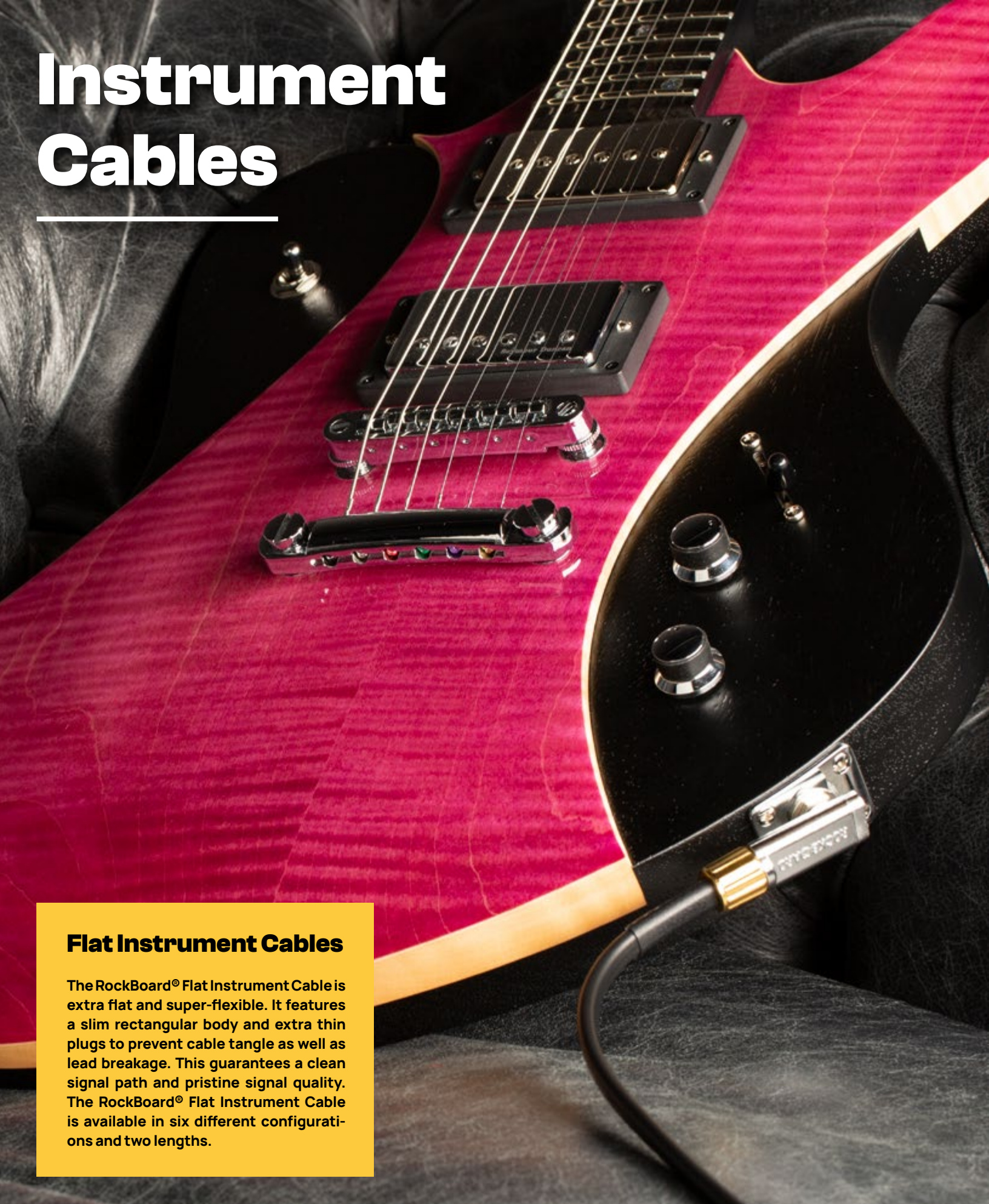
Designed like instrument cables with twisted copper shield for minimizing electrical interference. 5.5 x 2.1 mm barrel plugs. Length between plugs: 30 cm / 11 13/16". Plug dimensions (L x W x H): 20 x 9 x 10.5 mm / 1 3/16" x 6/16" x 5/16" (angled) 20.5 x 11 x 8.5 mm / 1 3/16" x 7/16" x 5/16" (straight).



Flat Polarity Reverser Cable

Plugs	Size	Product Nr.
Angled / Angled	2 Outputs	RBO CAB POWER DC2 A
Angled / Straight	2 Outputs	RBO CAB POWER DC2 S
Angled / Angled	4 Outputs	RBO CAB POWER DC4 A
Angled / Straight	4 Outputs	RBO CAB POWER DC4 S
Angled / Angled	6 Outputs	RBO CAB POWER DC6 A
Angled / Straight	6 Outputs	RBO CAB POWER DC6 S
Angled / Angled	8 Outputs	RBO CAB POWER DC8 A
Angled / Straight	8 Outputs	RBO CAB POWER DC8 S
Angled / Straight	Flat Polarity Reverser Cable, Red	RBO CAB POWER REV AS

Instrument Cables



Flat Instrument Cables

The RockBoard® Flat Instrument Cable is extra flat and super-flexible. It features a slim rectangular body and extra thin plugs to prevent cable tangle as well as lead breakage. This guarantees a clean signal path and pristine signal quality. The RockBoard® Flat Instrument Cable is available in six different configurations and two lengths.

1 Flat Instrument Cable



2 Premium Flat Instrument Cable



1 Flat Instrument Cable

Flat instrument lead cable. Super flat connectors. Operating Temperature: -15° C to +70° C / 5° F to 158° F. Flexible copper conductor: 20 x 0.12 mm / 36 AWG. Signal Insulation: PE (polyethylene). Flexible twisted copper shielding: 34 x 0.12 mm / 36 AWG. Outer Insulation: PVC. Capacitance Cond. / Shield: < 10 pF / decimeters. Conductor Resistance: < 10 mOhm / decimeters. 6.3 mm / 1/4" mono audio plugs. Outer dimensions cable: 7 x 3 mm / 1/4" x 1/8" (rectangular). Outer dimensions plugs: Straight (W x H): 12.5 x 12.5 mm / 1/2" x 1/2". Angled (W x H): 12.5 x 7.5 mm / 1/2" x 5/16".

Size	Plugs	Product Nr.
300 cm / 118 7/64"	Angled / Angled	RBO CAB FL 300BLK AA
300 cm / 118 7/64"	Straight / Angled	RBO CAB FL 300BLK SA
300 cm / 118 7/64"	Straight / Straight	RBO CAB FL 300BLK SS
600 cm / 236 7/32"	Angled / Angled	RBO CAB FL 600BLK AA
600 cm / 236 7/32"	Straight / Angled	RBO CAB FL 600BLK SA
600 cm / 236 7/32"	Straight / Straight	RBO CAB FL 600BLK SS

2 Premium Flat Instrument Cable

High-end flat instrument lead cable with rectangular profile. Flexible copper conductor 50 x 0.12 mm (36 AWG). Signal Insulation PE (polyethylene ø 2.9 mm / 7/64"). Semi-conductive layer (0.5 mm / 1/64") between signal. Insulation and shield for preventing cable microphonics. 100% braided tinned copper shielding 16 x 4 x 0.15 mm (34 AWG). Aluminum foil shield (0.06 mm / 0.002"). Capacitance cond./shield less than 8 pF / decimeter. Conductor Resistance less than 8 mOhm / decimeter. Operating Temperature -15° C to +70° C / 5° F to 158° F. Gold-plated 6.3 mm / 1/4" mono audio plugs. Outer dimension of Cable: 7.6 x 4.8 mm / 5/16" x 3/16" (rectangular). Outer dimensions plugs (L x W x H): 43.5 x 16 x 11.5 mm / 1 11/16" x 5/8" x 7/16".

Size	Plugs	Product Nr.
300 cm / 118 7/64"	Angled / Angled	RBO CAB FL PR 300 AA
300 cm / 118 7/64"	Straight / Angled	RBO CAB FL PR 300 SA
300 cm / 118 7/64"	Straight / Straight	RBO CAB FL PR 300 SS
600 cm / 236 7/32"	Angled / Angled	RBO CAB FL PR 600 AA
600 cm / 236 7/32"	Straight / Angled	RBO CAB FL PR 600 SA
600 cm / 236 7/32"	Straight / Straight	RBO CAB FL PR 600 SS

Save Space, Connect More



2 Flat Patch Cable Black Series

4 Flat Patch Cable Sapphire Series



3 Flat Patch Cable Gold Series

Flat Patch Cables

The RockBoard® Patch Cables are extra flat and space-saving. Designed to optimize pedalboard real estate, they feature a slim rectangular body and extra thin, angled plugs, to keep your setup organized.

2 Flat Patch Cable Black Series

Size	Product Nr.
5 cm / 1 31/32"	RBO CAB PC F 5 BLK
5 cm / 1 31/32"	RBO CAB PC F 5 BW (Bowl with 50 pcs.)
10 cm / 3 15/16"	RBO CAB PC F 10 BLK
20 cm / 7 7/8"	RBO CAB PC F 20 BLK
30 cm / 11 13/16"	RBO CAB PC F 30 BLK
45 cm / 17 23/32"	RBO CAB PC F 45 BLK
60 cm / 23 5/8"	RBO CAB PC F 60 BLK
80 cm / 31 1/2"	RBO CAB PC F 80 BLK
100 cm / 39 3/8"	RBO CAB PC F 100 BLK
120 cm / 47 1/4"	RBO CAB PC F 120 BLK
140 cm / 55 1/8"	RBO CAB PC F 140 BLK

3 Flat Patch Cable Gold Series

Size	Product Nr.
5 cm / 1 31/32"	RBO CAB PC F 5 GD
10 cm / 3 15/16"	RBO CAB PC F 10 GD
20 cm / 7 7/8"	RBO CAB PC F 20 GD
30 cm / 11 13/16"	RBO CAB PC F 30 GD
45 cm / 17 23/32"	RBO CAB PC F 45 GD
60 cm / 23 5/8"	RBO CAB PC F 60 GD
80 cm / 31 1/2"	RBO CAB PC F 80 GD
100 cm / 39 3/8"	RBO CAB PC F 100 GD
120 cm / 47 1/4"	RBO CAB PC F 120 GD
140 cm / 55 1/8"	RBO CAB PC F 140 GD

4 Flat Patch Cable Sapphire Series

Size	Product Nr.
5 cm / 1 31/32"	RBO CAB PC F 5 SP
10 cm / 3 15/16"	RBO CAB PC F 10 SP
20 cm / 7 7/8"	RBO CAB PC F 20 SP
30 cm / 11 13/16"	RBO CAB PC F 30 SP
45 cm / 17 23/32"	RBO CAB PC F 45 SP
60 cm / 23 5/8"	RBO CAB PC F 60 SP
80 cm / 31 1/2"	RBO CAB PC F 80 SP
100 cm / 39 3/8"	RBO CAB PC F 100 SP
120 cm / 47 1/4"	RBO CAB PC F 120 SP
140 cm / 55 1/8"	RBO CAB PC F 140 SP

1 Bender75



1 Bender75

Size	Product Nr.
7.5 cm / 2 61/64"	RBO CAB PC F B75 BLK
7.5 cm / 2 61/64"	RBO CAB PC F B75 BW (Bowl with 50 pcs.)

5 Flat Patch Cable Salt & Pepper Tweed Series

Size	Product Nr.
5 cm / 1 31/32"	RBO CAB PC F 5 SPT
10 cm / 3 15/16"	RBO CAB PC F 10 SPT
20 cm / 7 7/8"	RBO CAB PC F 20 SPT
30 cm / 11 13/16"	RBO CAB PC F 30 SPT
60 cm / 23 5/8"	RBO CAB PC F 60 SPT

6 Flat Patch Cable Vintage Tweed Series

Size	Product Nr.
5 cm / 1 31/32"	RBO CAB PC F 5 VT
10 cm / 3 15/16"	RBO CAB PC F 10 VT
20 cm / 7 7/8"	RBO CAB PC F 20 VT
30 cm / 11 13/16"	RBO CAB PC F 30 VT
60 cm / 23 5/8"	RBO CAB PC F 60 VT

7 Black Coiled Cable Series

Size	Product Nr.
30 cm / 11 13/16"	RBO CAB PC F 30 CC
50 cm / 19 11/16"	RBO CAB PC F 50 CC
100 cm / 39 3/8"	RBO CAB PC F 100 CC
150 cm / 59 1/16"	RBO CAB PC F 150 CC

5 Flat Patch Cable Salt & Pepper Tweed Series



6 Flat Patch Cable Vintage Tweed Series



7 Black Coiled Cable Series

Specifications for RockBoard® Flat Patch Cables:

- Flat patch cables with rectangular profile
- Compact and super flat angled plugs
- Flexible copper conductor 20 x 0.12 mm / 36 AWG
- Twisted copper shielding 34 x 0.12 mm / 36 AWG
- Capacitance of less than 10 pF/decimeters
- Conductor resistance of less than 10 mOhm/decimeters
- Angled 6.3 mm / 1/4" mono audio plugs
- Operating temperature: -15° C to +70° C / 5° F to 158° F
- Outer dimensions cable (W x H): 7 x 3 mm / 9/32" x 1/8" (rectangular)
- Outer dimensions plugs (W x H): 12.5 x 7.5 mm / 1/2" x 5/16"



NEW

Customized and Solderless

RockBoard® PatchWorks® – Solderless Patch Cables

The RockBoard® PatchWorks® Solderless Patch Cables are the first of their kind, because they can be assembled with exactly the plug you need. The ingenious and easy-to-use design has a two-piece plug that can be changed from straight to angled simply by turning one part by 90 degrees. Using professional-grade, high-quality cable and connectors with gold-plated tips, the RockBoard® PatchWorks® give you every-thing you desire for your hi-fi pedalboard. Build your own patch cables, in exactly the length you need them, cutting down on excess cable path and curbing signal loss.

1 Solderless Set



1 PatchWorks® Solderless Set

10 Plugs. Cable \varnothing 4 mm / $5/32$ ", 3 m / 9.8 ft. 80 pF / m, 37 mOhm/m. 1x Cable Cutter. 1x HexKey.

Chrome

Product Nr.: RBO CAB PW SET CR

Gold

Product Nr.: RBO CAB PW SET GD

2 PatchWorks® Solderless Plugs

Set of 2 pcs. 1 HexKey.

Chrome

Product Nr.: RBO CAB PW PLUG 2 CR

Gold

Product Nr.: RBO CAB PW PLUG 2 GD

3 PatchWorks® Solderless Plugs

Set of 6 pcs. 1 HexKey.

Chrome

Product Nr.: RBO CAB PW PLUG 6 CR

Gold

Product Nr.: RBO CAB PW PLUG 6 GD

4 PatchWorks® Solderless Cable

Cable \varnothing 4 mm / $5/32$ ". 80 pF/m, 37 mOhm/m.

3 m / 9.8 ft

Product Nr.: RBO CAB PW CAB 3

6 m / 19.7 ft

Product Nr.: RBO CAB PW CAB 6

5 PatchWorks® Cable Cutter

For PatchWorks solderless patch cable system. Easy to use. Makes precise and smooth cuts. 4 mm inlet specifically designed for PatchWorks Solderless Cable.

Product Nr.: RBO CAB PW CUTTER

6 PatchWorks® TX8 Wrench

Spare TX8 wrench for PatchWorks solderless cable system. TX8 hexalobular internal wrench. Product Nr.: RBO CAB PW HEXKEY

7 PatchWorks® Spare TX Screws

Spare TX8 screws for PatchWorks solderless plugs. M2 x 4 mm threads. 4 mm countersunk screw heads. Set of 10 pcs.

Product Nr.: RBO CAB PW SCREW

2 Solderless Plugs 2 pcs.



Chrome

3 Solderless Plugs 6 pcs.



Gold

4 Solderless Cable



5 Cable Cutter



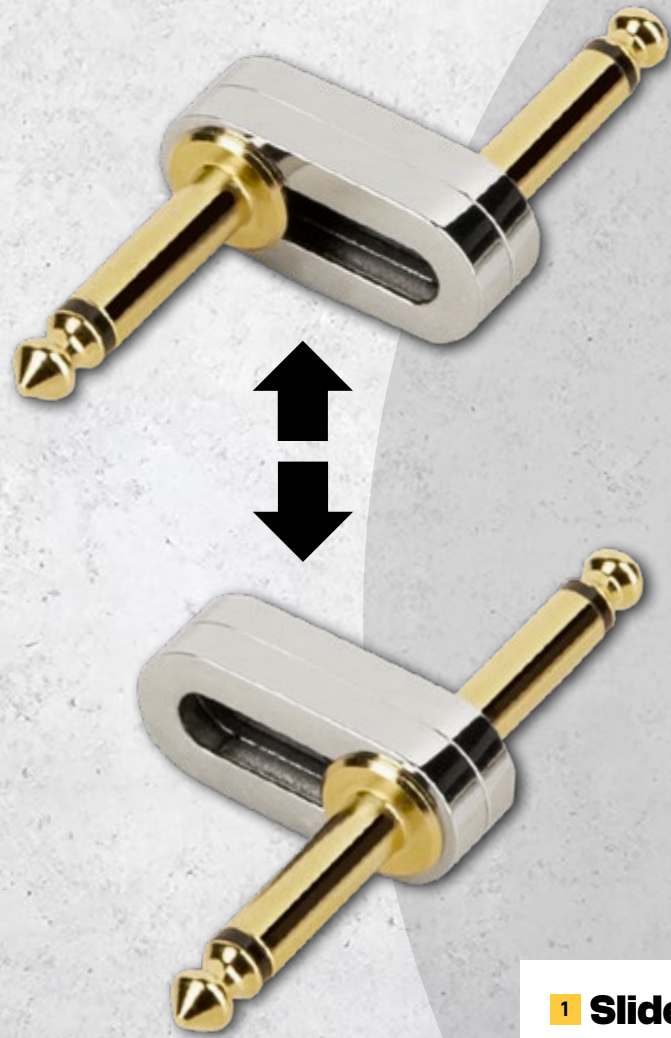
6 TX8 Wrench



7 Spare TX Screws



Stay Connected



Slider Plug

The RockBoard Slider Plug is a super-compact pedal connector (jack coupler) with adjustable plug position. The width of approx. 12 millimeters (1/2"), makes your pedals come closer together. Using the 6.3 mm (1/4") Slider Plug guarantees a short, clean signal path and pristine signal quality.

1 Slider Plug

1 Slider Plug
Pedal connector with adjustable plug offset. Shortest possible distance between pedals. Gold-plated connectors. 6.3 mm / 1/4" mono audio plugs on both sides. Length (plug to plug): 12 mm / 1/2". Offset (plug to plug): adjustable from 0 - 20 mm / 0" - 25/32".

Color	Product Nr.
Chrome	RBO PC SLIDE CHR
Gold	RBO PC SLIDE GD



Chrome

Gold

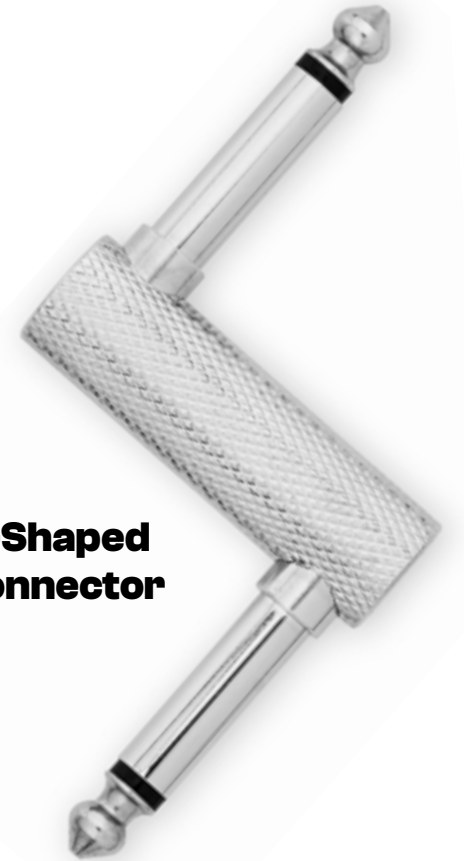
Connectors

2 Straight Connector



3 Z-Shaped Connector

4 N-Shaped Connector



2 Straight Connectors

Straight pedal connector. Connects side-mounted jacks. Suitable for pedals with standard, rectangular housing. 6.3 mm / 1/4" mono audio plugs on both sides. Length (plug to plug): 12 mm / 1/2".

Color	Product Nr.
Black	RBO PC S BK
Gold	RBO PC S GD
Nickel	RBO PC S NK

3 Z-Shaped Connectors

Offset pedal connector. Connects offset side-mounted jacks. Suitable for pedals with standard, rectangular housing. 6.3 mm / 1/4" mono audio plugs on both sides. Length (plug to plug): 10 mm / 17/16".

Color	Product Nr.
Black	RBO PC Z BK
Gold	RBO PC Z GD
Nickel	RBO PC Z NK

4 N-Shaped Connectors

Offset pedal connector. Connects offset side-mounted jacks. Suitable for pedals with standard, rectangular housing. 6.3 mm / 1/4" mono audio plugs on both sides. Length (plug to plug): 19 mm / 3/4".

Color	Product Nr.
Black	RBO PC N BK
Gold	RBO PC N GD
Nickel	RBO PC N NK

1 Flat XLR Cable



Flat XLR Cables

The RockBoard® PREMIUM Flat XLR Cables are professional grade cables made with the utmost care. Designed and developed in Germany, these cables feature select, high-grade materials that prevent twisting and help protect against accidental damage. Enhanced shielding against high and low frequency interference and a flexible conductor core make this cable rival all other leading brands on the market. Prevent unwanted noise in your signal and preserve your unaltered, natural tone with the RockBoard® Premium Flat XLR Cable.



2 Flat Patch TRS Cable



Y Splitter Cable

1 Flat XLR Cable

2x flexible copper conductor 20 x 0.12 mm (36 AWG). Braided copper shielding 16 x 4 x 0.12 mm (36 AWG). Capacitance of less than 10 pF/decimeters. Conductor resistance of less than 10 mOhm/decimeter. Operating temperature: -15°C to +70°C. Outer cable dimensions: 7 x 3 mm / 9/32" x 1/8".

Size	Product Nr.
30 cm / 11 13/16"	RBO CAB F XLR 30 BK
60 cm / 23 5/8"	RBO CAB F XLR 60 BK
90 cm / 35 7/16"	RBO CAB F XLR 90 BK
300 cm / 118 7/64"	RBO CAB F XLR 300 BK
600 cm / 236 7/32"	RBO CAB F XLR 600 BK
900 cm / 354 21/64"	RBO CAB F XLR 900 BK

2 Flat Patch TRS Cable

Flat TRS cable with rectangular angled profile. For connecting foot controllers and expression pedals. Compact and super flat angled plugs. Flexible copper conductor 20 x 0.12 mm. Twisted copper shielding 34 x 0.12 mm. PE (polyethylene) signal insulation. Outer PVC insulation. Capacitance of less than 10 pF/decimeters. Conductor resistance of less than 10 mOhm/decimeters. Angled 6.3 mm / 1/4" TRS audio plugs. Operating temperature: -15°C to +70°C. Outer dimensions cable (W x H): 7 x 3 mm / 9/32" x 1/8" (rectangular). Outer dimensions plugs (W x H): 12.5 x 7.5 mm / 1/2" x 5/16".

Size	Product Nr.
15 cm / 5 29/32"	RBO CAB F TRS 15 BK
30 cm / 11 13/16"	RBO CAB F TRS 30 BK
60 cm / 23 5/8"	RBO CAB F TRS 60 BK
120 cm / 47 1/4"	RBO CAB F TRS 120 BK
300 cm / 118 7/64"	RBO CAB F TRS 300 BK
600 cm / 236 7/32"	RBO CAB F TRS 600 BK
20 cm / 7 7/8"	RBO CAB F Y 20 BK Y Splitter Cable
30 cm / 11 13/16"	RBO CAB F Y 30 BK Y Splitter Cable
50 cm / 19 11/16"	RBO CAB F Y 50 BK Y Splitter Cable

3 Flat Looper/Switcher Connector Cable



4 Flat Looper/Switcher Connector Cable Gold Series



3 Flat Looper/Switcher Connector Cable

Flat patch cables with rectangular profile. Compact and super flat angled/straight plugs. Perfect for use with looper/switchers or effects pedals with tightly spaced jacks. Flexible copper conductor (20 x 0.12 mm / 36 AWG). Twisted copper shielding (34 x 0.12 mm / 36 AWG). PE (polyethylene) signal insulation. PVC cable mantle. Capacitance less than 10 pF/decimeters. Conductor resistance less than 10 mOhm/decimeters. 6.3 mm mono audio plugs. Operating temperature -15°C to +70°C / 5°F to 158°F / 5°F to 158°F. Outer dimensions cable (W x H) 7 x 3 mm / 1/4" x 1/8" (rectangular). Outer dimensions plugs (W x H) 12.5 x 7.5 mm / 1/2" x 5/16" (angled), 12.5 x 12.5 mm / 1/2" x 1/2" (straight).

Size	Plugs	Product Nr.
20 cm / 7 7/8"	Straight / Angled	RBO CAB PC F 20 BSA
40 cm / 15 3/4"	Straight / Angled	RBO CAB PC F 40 BSA
60 cm / 23 5/8"	Straight / Angled	RBO CAB PC F 60 BSA
100 cm / 39 3/8"	Straight / Angled	RBO CAB PC F 100 BSA

4 Flat Looper/Switcher Connector Cable Gold Series

High quality, double shielded flat patch cables with rectangular profile. Compact and super flat plugs. Gold-plated connectors. Metal plug housings. Flexible copper conductor (20 x 0.12 mm / 36 AWG). 90% braided tinned copper shielding (4 x 16 x 0.12 mm / 36 AWG). Additional aluminum foil shielding. PE (polyethylene) signal insulation. PVC cable mantle. Capacitance less than 10 pF/decimeter. Conductor resistance less than 10 mOhm/decimeter. Angled 6.3 mm mono audio plugs. Operating temperature -15°C to +70°C / 5°F to 158°F. Outer dimensions cable (W x H) 7 x 3 mm / 1/4" x 1/8" (rectangular). Outer dimensions plugs (W x H) 12.5 x 7.5 mm / 1/2" x 5/16" (angled), 12.5 x 12.5 mm / 1/2" x 1/2" (straight). Black with gold-plated plug housings.

Size	Plugs	Product Nr.
20 cm / 7 7/8"	Straight / Angled	RBO CAB PC F 20 GSA
40 cm / 15 3/4"	Straight / Angled	RBO CAB PC F 40 GSA
60 cm / 23 5/8"	Straight / Angled	RBO CAB PC F 60 GSA
100 cm / 39 3/8"	Straight / Angled	RBO CAB PC F 100 GSA

1 Flat Patch MIDI Cable



1 Flat Patch MIDI Cable

Compact and super flat angled plugs and cable. Flexible oxygen free copper conductors 5 x 7 x 0.12 mm. Suitable for Clock/SYNC Capabilities & Phantom Power. Max. rated current 1A. Angled DIN 5 pin connectors. Operating temperature -20° C to +60° C. Outer dimensions cable (W x H): 6.5 x 3.5 mm (1/4" x 9/64" (rectangular). Plug dimensions (LxWxH): 33 x 15 x 10 mm (1 5/16" x 9/16" x 3/8"). Black.

Size	Product Nr.
30 cm / 11 13/16"	RBO CAB MIDI 30 BK
60 cm / 23 5/8"	RBO CAB MIDI 60 BK
100 cm / 39 3/8"	RBO CAB MIDI 100 BK
200 cm / 78 47/64"	RBO CAB MIDI 200 BK
300 cm / 118 7/64"	RBO CAB MIDI 300 BK
500 cm / 196 27/32"	RBO CAB MIDI 500 BK
1000 cm / 393 45/64"	RBO CAB MIDI 1000 BK

2 Flat TRS to MIDI Cable

Flat TRS to MIDI cable with a rectangular profile. Prevents signal breakage and cable jams. Compact straight DIN 5-pin plug to flat angled 3.5 mm stereo jack plug (TRS). Black.

Type A (MIDI standard)

Pin assignment: MIDI 5 (Sink) - TRS tip, MIDI 4 (Source) - TRS ring, MIDI 2 (Shield) - TRS sleeve, MIDI 1 and MIDI 3 - not connected. Compatible with devices from Boss, Empress, Korg, Akai, MOD, Make Noise and many more.

Size	Product Nr.
30 cm / 11 13/16"	RBO CAB F TMA 30 BK
60 cm / 23 5/8"	RBO CAB F TMA 60 BK
150 cm / 59 1/16"	RBO CAB F TMA 150 BK

Type B

Pin assignment: MIDI 4 (Source) - TRS tip, MIDI 5 (Sink) - TRS ring, MIDI 2 (Shield) - TRS sleeve, MIDI 1 and MIDI 3 - not connected. Compatible with devices from Novation, 1010Music, Arturia, Malekko, Polyend, Faderfox and many more.

Size	Product Nr.
30 cm / 11 13/16"	RBO CAB F TMB 30 BK
60 cm / 23 5/8"	RBO CAB F TMB 60 BK
150 cm / 59 1/16"	RBO CAB F TMB 150 BK

2 Flat TRS to MIDI Cable

NEW



Stay in the loop



Midi Cables

After the introduction of our original Flat MIDI Cables, we tasked our Design team with creating an affordable MIDI Cable with a fully adjustable plug. The FlaX Plug MIDI Cable is based on our Flat MIDI design, with compact, omnidirectional plugs. Using two hex key screws, you can lock the FlaX Plug MIDI Cable into a straight or angled end. Anything goes with the FlaX MIDI Cables!

3 FlaX Plug MIDI Cable

Flat MIDI cable with omni-directional, lockable compact plugs. Plug orientation alterable from straight to angled to the left or right. Orientation lockable via 1.5 mm hex key wrench (not included). Flat rectangular cable, prevents cable breakage and cable jams. Compact DIN 5-pin plugs. 5 x flexible oxygen-free copper conductors 5 x 7 x 0.12 mm. Suitable for Clock/SYNC Capabilities & Phantom Power. Max. rated current 1A. Outer insulation: PVC (Polyvinylchloride). Operating temperature: -20° C to +60° C (-4° F to 140° F). Dimensions plug (L x W x H): 33 x 20 x 15 mm (1 19/64" x 25/32" x 19/32"). Dimensions cable (W x H): 6.5 x 3.5 mm (1/4" x 9/64").

Size	Product Nr.
30 cm / 11 13/16"	RBO CAB MD FX 30 BK
60 cm / 23 5/8"	RBO CAB MD FX 60 BK
100 cm / 39 3/8"	RBO CAB MD FX 100 BK
200 cm / 78 47/64"	RBO CAB MD FX 200 BK
500 cm / 196 27/32"	RBO CAB MD FX 500 BK

3 FlaX Plug MIDI Cable



Bag & Zip It

Effects Pedal Bags



Specs for RockBoard® Effects Pedal Bags

- Strong, water-resistant RokTex® surface material
- 10 mm / 3/8"
- 2-way zipper (8 mm / 5/16" wide with nylon grip)
- Detachable, adjustable and padded shoulder strap
- Padded twin-handle
- 1 front pocket for cables and accessories
- 1 inside accessory pocket
- PVC reinforced bottom
- Metal feet & hardware

RockBoard® Effects Pedal Bags

These bags offer perfect protection for guitar and bass multi effects processors, voice multi effects processors, as well as looper switchers and MIDI controllers – for a bargain price!

Type	Internal Dimensions	Product Nr.
No. 01	20 x 18 x 10 cm / 7 7/8" x 7 1/16" x 3 15/16"	RBO EPB 01
No. 02	25 x 18 x 10 cm / 9 13/16" x 7 1/16" x 3 15/16"	RBO EPB 02
No. 03	30 x 22 x 10 cm / 11 13/16" x 8 11/16" x 3 15/16"	RBO EPB 03
No. 04	35 x 25 x 10 cm / 13 3/4" x 9 13/16" x 3 15/16"	RBO EPB 04
No. 05	40 x 30 x 12 cm / 15 3/4" x 11 13/16" x 4 3/4"	RBO EPB 05
No. 06	45 x 25 x 12 cm / 17 11/16" x 9 13/16" x 4 3/4"	RBO EPB 06
No. 07	50 x 30 x 12 cm / 19 11/16" x 11 13/16" x 4 3/4"	RBO EPB 07
No. 08	50 x 15 x 10 cm / 19 11/16" x 5 7/8" x 3 15/16"	RBO EPB 08
No. 09	55 x 30 x 12 cm / 21 5/8" x 11 13/16" x 4 3/4"	RBO EPB 09
No. 10	60 x 35 x 12 cm / 23 5/8" x 13 3/4" x 4 3/4"	RBO EPB 10
No. 11	70 x 35 x 12 cm / 27 9/16" x 13 3/4" x 4 3/4"	RBO EPB 11
No. 12	30 x 7 x 5 cm / 11 13/16" x 2 3/4" x 1 15/16"	RBO EPB 12
No. 13	40 x 8 x 7 cm / 15 3/4" x 3 1/8" x 2 3/4"	RBO EPB 13
No. 14	55 x 8 x 7 cm / 21 5/8" x 3 1/8" x 2 3/4"	RBO EPB 14

Front pocket for cables and accessories



Inside accessory pocket



Shoulder strap (35 mm / 1 3/8" wide)



PVC reinforced bottom



Effects Pedal Suitcases



1 Effects Pedal Case 01 B

2 Effects Pedal Case 02 A

1 Effects Pedal Case 02 B



2 Effects Pedal Case 01 A

Color	Internal Dimensions (W x D x H)	Weight	Product Nr.
Black	47 x 47,7 x 14,5 cm / 18 1/2" x 18 25/32" x 5 45/64"	4,0 kg	RBO EPC 01 B
Black	62 x 47,7 x 14,5 cm / 24 13/32" x 18 25/32" x 5 45/64"	4,5 kg	RBO EPC 02 B
Silver	47 x 47,7 x 14,5 cm / 18 1/2" x 18 25/32" x 5 45/64"	6,5 kg	RBO EPC 01 A
Silver	62 x 47,7 x 14,5 cm / 24 13/32" x 18 25/32" x 5 45/64"	8,0 kg	RBO EPC 02 A

1 Effects Pedal Case 01/02 B

Case for effects pedals with detachable lid. Durable and stable Pedal Case for 8 to 10 Effects (RBO EPC 01 B) or for 10 to 12 Effects (RBO EPC 02 B). Black PVC surface. Aluminium edging. Interior lined with hook and loop. Lid padded with nub foam. 2 locks. Nickel-plated steel spring handle with transparent PVC cover. PVC feet.

2 Effects Pedal Case 01/02 A

Case for effects pedals with detachable lid. Durable and stable Pedal Case for 8 to 10 Effects (RBO EPC 01 A) or for 10 to 12 Effects (RBO EPC 02 A). Silver PVC surface. Aluminium edging. Rugged, chrome plated ball corners. Interior lined with hook and loop. Lid padded with nub foam. 2 butterfly locks. Nickel-plated steel spring handle with transparent PVC cover. PVC feet.

2 locks



Aluminium edging



PVC feet



Interior lined with hook and loop



2 butterfly locks



Rugged, chrome plated ball corners



Ready For the Stage

StageTuner lets you always have your tuning in view.
Be it in a 19-inch-rack or right on the board in front of you.



2 StageTuner ST-02



3 Stage Tuner ST-02 Power Adapter

You can mount the StageTuner ST-02 on your pedalboard ... Or even in a 19-inch-rack.



Calibrate the ST-02 to your preferences.



1 StageTuner ST-01V2



1 StageTuner ST-01 V2

Chromatic pedal tuner for electric instruments. True bypass. 28 segment (FND) & LED display. Separate output for audible tuning. Tuning range A0 (27.5 Hz) - C8 (4186 Hz). Reference frequency 432 - 445 Hz (in 1 Hz steps). Detuning function with 3 settings (b / bb / bbb). Precision +/- 1 Cent. Power supply via included 9V battery or optional 9V DC power adapter (RockBoard® Power Ace), polarity (-) center. 2.1 x 5.5 mm barrel plug. Dimensions (W x L x H): 73 x 110 x 47 mm / 2 7/8" x 4 5/16" x 3 15/16". Product Nr.: RBO E ST 01

2 StageTuner ST-02

19" Rack Tuner with detachable rack ears. Bright LED display with anti-glare front. Tuning range B1 (15.44 Hz) - C8 (4186 Hz). Tuning accuracy +/- 1 cent. Display modes: Normal, Strobe. Reference frequency adjustable from 432 - 445 Hz in 1Hz steps. Footswitchable bypass button on the front. Front-mounted calibrate button for selecting reference frequency. Compatibility with RockBoard® QuickMount® for RockBoard® pedalboard mounting (sold separately). Connections: 2 x 6.3 mm / 1/4" TS input (front and rear) 1 x 6.3 mm / 1/4" TS out (rear). 9V DC 2.1 x 5.5 mm barrel input. Incl. 9V DC power adapter and mounting screws. Dimensions (W x H x D): 489 x 45 x 63 mm / 19 1/4" x 1 3/4" x 2 1/2" (with rack ears) 399 x 45 x 63 mm / 15 11/16" x 1 3/4" x 2 1/2" (without rack ears). Product Nr.: RBO E ST 02

3 Stage Tuner ST-02 Power Adapter

Power adapter for RockBoard StageTuner ST-02. 9V DC. 500 mA. 2.1 x 5.5 mm barrel plug. Polarity (-) center. 1.5 m (59") reinforced cable. Exchangeable multi-regional plug adapters (EU, UK, US/CA, AU/NZ). Input voltage 100-240V AC. Product Nr.: RBO E ST 02 PS

1 Natural Sound Buffer

The Rockboard® Natural Sound Buffer is a op-amp based signal buffer that eliminates cable capacitance and loss of top end associated with long cable paths or using several unbuffered effects pedals. Its position in the signal chain should be ascertained by experimentation depending on the effects pedals used to optimize your sound.



2 Hook & Loop Tape



3 Cable Ties

Essential Add-ons

1 Natural Sound Buffer

Op-amp-based signal buffer. Prevents signal loss in effects chains. Solid metal housing. Power supply via optional 9V DC adapter, Battery operation not supported. Dimensions (W x D x H): 74 mm x 42 mm x 33 mm / 2 29/32" x 1 21/32" x 1 9/32". Product Nr.: RBO E NSB

2 Hook & Loop Tape

Self-adhesive Hook & Loop Tape is a simple but versatile solution for mounting effects pedals and power supplies on your pedalboard. The high-performance hook and loop tape ensures that your pedals stay in place. Effortlessly applied, it provides perfect adhesion for any pedal.

Size	Product Nr.
Narrow - 50 cm / 1.4 ft	RBO HL TAPE 25
Wide - 50 cm / 1.4 ft	RBO HL TAPE 50
Wide - 1 m / 3.3 ft	RBO HL TAPE 100
Wide - 2 m / 6.6 ft	RBO HL TAPE 200
Wide - 3 m / 9.9 ft	RBO HL TAPE 300
Wide - 5 m / 16.4 ft	RBO HL TAPE 500
Wide - 6 m / 19.7 ft	RBO HL TAPE 600

3 Cable Ties

The perfect solution for bundling, tying and organizing cables. Reusable and available in various sizes, they can easily be fixed to the cable. To make bundles more easily distinguishable, all different lengths are available in six colors!

Size	Color / Product Nr.					
	Black	Blue	Green	Orange	Red	Yellow
Set of 10 pcs.						
10 x 120 cm / 25/64" x 4 23/32"	RBO CAB TIE 120 B	RBO CAB TIE 120 BL	RBO CAB TIE 120 GR	RBO CAB TIE 120 OR	RBO CAB TIE 120 R	RBO CAB TIE 120 YE
20 x 200 cm / 25/32" x 7 7/8"	RBO CAB TIE 200 B	RBO CAB TIE 200 BL	RBO CAB TIE 200 GR	RBO CAB TIE 200 OR	RBO CAB TIE 200 R	RBO CAB TIE 200 YE
20 x 300 cm / 25/32" x 11 13/16"	RBO CAB TIE 300 B	RBO CAB TIE 300 BL	RBO CAB TIE 300 GR	RBO CAB TIE 300 OR	RBO CAB TIE 300 R	RBO CAB TIE 300 YE
40 x 400 cm / 1 37/64" x 15 3/4"	RBO CAB TIE 400 B	RBO CAB TIE 400 BL	RBO CAB TIE 400 GR	RBO CAB TIE 400 OR	RBO CAB TIE 400 R	RBO CAB TIE 400 YE
50 x 500 cm / 1 31/32" x 19 11/16"	RBO CAB TIE 500 B	RBO CAB TIE 500 BL	RBO CAB TIE 500 GR	RBO CAB TIE 500 OR	RBO CAB TIE 500 R	RBO CAB TIE 500 YE

4 StomPete



5 BigToe



4 Footswitch Topper StomPete

Available in black or silver. Set of 3 pcs.

Black

Product Nr.: RBO FT STOMPETE BK

Silver

Product Nr.: RBO FT STOMPETE SI

5 Footswitch Topper BigToe

Available in black or silver. Set of 3 pcs.

Black

Product Nr.: RBO FT BIGTOE BK

Silver

Product Nr.: RBO FT BIGTOE SI

Have you ever been blinded on stage? Not by the sweet halo of the limelight, but rather the cold shine of LEDs on your pedalboards? Now there is a solution. The RockBoard® LED Dampers are defractive caps for LEDs that will dampen the glare of bright LEDs on your pedals.

6 LED Damper

Defractive cover for LEDs. Dampens the glare of bright LEDs. Fits LEDs with or without bevel. Self-adhesive. Set of 5 pcs.

Size S: diameter 8 mm / 5/16"

Product Nr.: RBO DAMPER S

Size L: diameter 10.5 mm / 13/32"

Product Nr.: RBO DAMPER L

7 Jewel LED Damper

Inside diameter 8 mm / 5/16". Dampens the glare of bright LEDs. Fits LEDs with or without bevel. Self-adhesive. Set of 5 pcs.

Size S: diameter 8 mm / 5/16"

Product Nr.: RBO DAMPER JEWEL S

Size L: diameter 10.5 mm / 13/32"

Product Nr.: RBO DAMPER JEWEL L

Footswitch Topper

Footswitch topper for effects pedals. Enlarges the footswitch diameter for easier accessibility. Fits most common footswitches.



StomPete

- 1-piece design based on industrial emergency stop footswitches
- Fixation with 1.5 mm hex key set screw
- Outside diameter (top) 24.3 mm
- Inside diameter 10.3 mm
- Additional height ca. 4.5 mm
- Made of anodized aluminum

BigToe

- 2-piece design for tight fit and easy removal
- Outside diameter (top) 24.5 mm
- Inside diameter 9.5 mm (flexible)
- Additional height ca. 2.9 mm
- Made of anodized aluminum and thermoplastic rubber

6 LED Damper



7 Jewel LED Damper



ROCKBOARD®

by WARWICK



**1 T-Shirt
"Screamer"**



**2 Coffee
Cup**

**3 Mobile
Phone Stand**

1 Promo - Screamer
Baseball T-Shirt White/Black
Size S, M, L, XL, XXL
Product Nr.: PR T SCREAMER BW S (M, L, XL, XXL)

2 Coffee Cup
Matte, black. 8 oz.
Product Nr.: PR RBO PRO CUP BLK

3 Mobile Phone Stand
Weight: 125 g. Dimensions (W x D x H): 75 x 90 x 95 mm / 2²⁹/₃₂" x 3¹⁷/₃₂" x 3²³/₃₂".
Aluminum Black
Product Nr.: PR RBO PHONE STAND B
Aluminum Silver
Product Nr.: PR RBO PHONE STAND S

Note: The manufacturer reserves the right to change these specifications without notice

USA DISTRIBUTION: Framus & Warwick Music USA, Inc. | info@framuswarwickusa.com | 629.202.6790
CHINESE DISTRIBUTION: Warwick Music Equipment Trading (Shanghai) Co. Ltd. | info@warwick.cn | +862134060110
NORTH EUROPEAN DISTRIBUTION: info@w-distribution.de | www.w-distribution.de | www.facebook.com/warwickmusicdistribution
HEADQUARTERS: Warwick GmbH & Co. Music Equipment KG | 08258 Markneukirchen / Germany | +49 (0) 37422 / 555-0

Family Owned • Solar Powered • Sustainably Manufactured in a Green Environment